

INDEX TO DETAILED MAPS

Bathurst Regional Council Roadside Vegetation Management Plan

- Bathurst Regional LGA
- Roads assessed

0 5 10 20 Kilometres

A4 @ 1:600000
Ref: 17249 - BRC RVMP
Author: DM 02/03/18

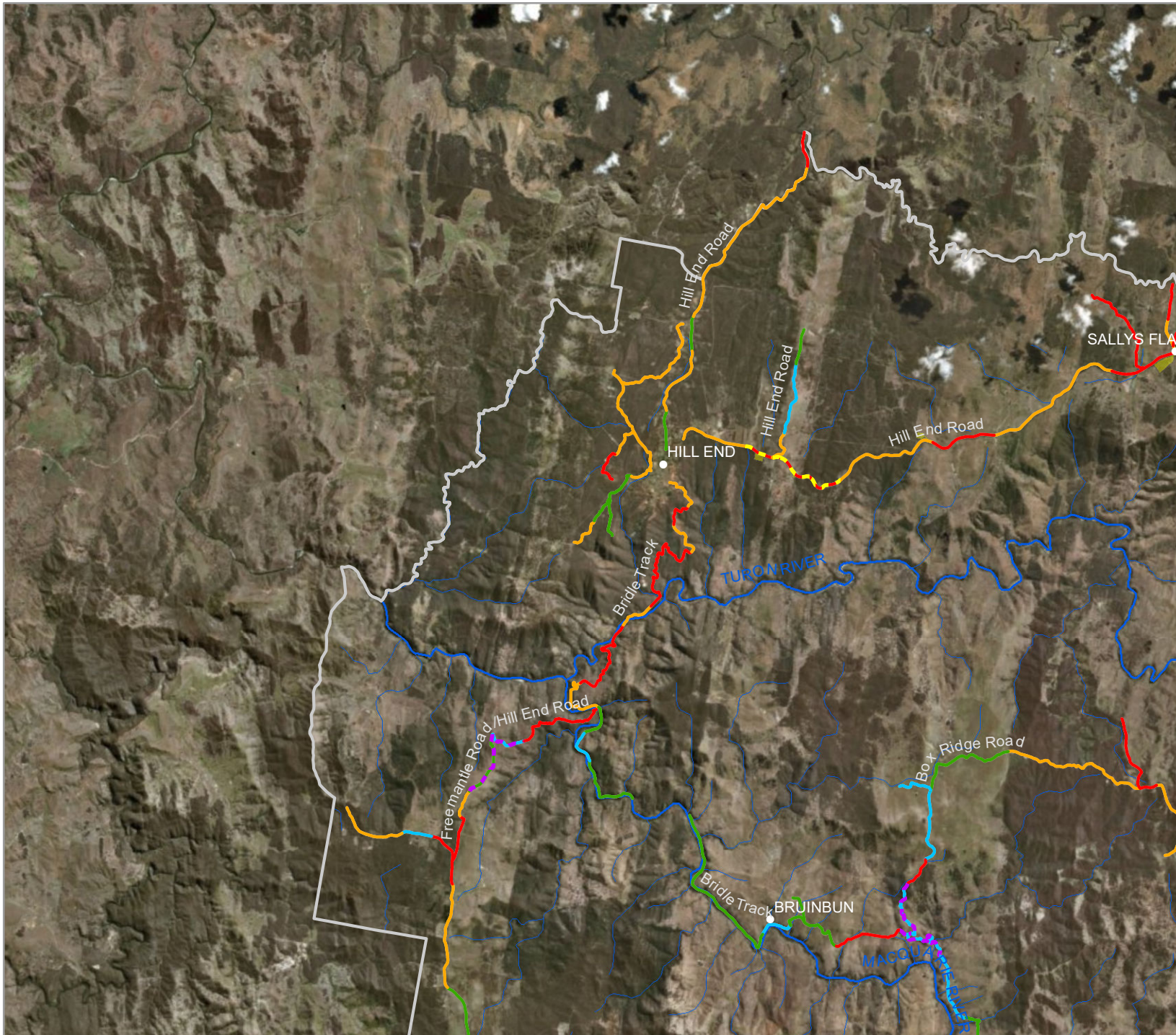
ngh environmental



CONSERVATION VALUES, PRIORITY SITES AND REHABILITATION SITES

Bathurst Regional Council Roadside Vegetation Management Plan 2017

MAP 1 OF 8



- Bathurst Regional LGA
- Water course
 - Major
 - Minor
- State Forests/Nature Reserves
- Travelling stock reserves
- Roadside conservation category
 - High - TEC or threatened species habitat
 - Medium
 - Degraded TEC
 - Low
- Priority sites
 - Threatened flora and fauna habitat
 - Priority weed control
- Rehabilitation sites
 - Sites that can contribute to connectivity
 - Degraded sites in high conservation value areas

Notes:
 - Data collected by ngenvironmental (2013 - 2015)
 - Location, waterway, State Forest and Nature Reserve data Copyright © Geoscience Australia
 - Travelling stock reserve data courtesy NSW Crown Lands
 - Base map Copyright © Esri and its data suppliers.



A4 @ 1:150000
 Ref: 17249 - BRC RVMP
 Author: DM 02/03/18

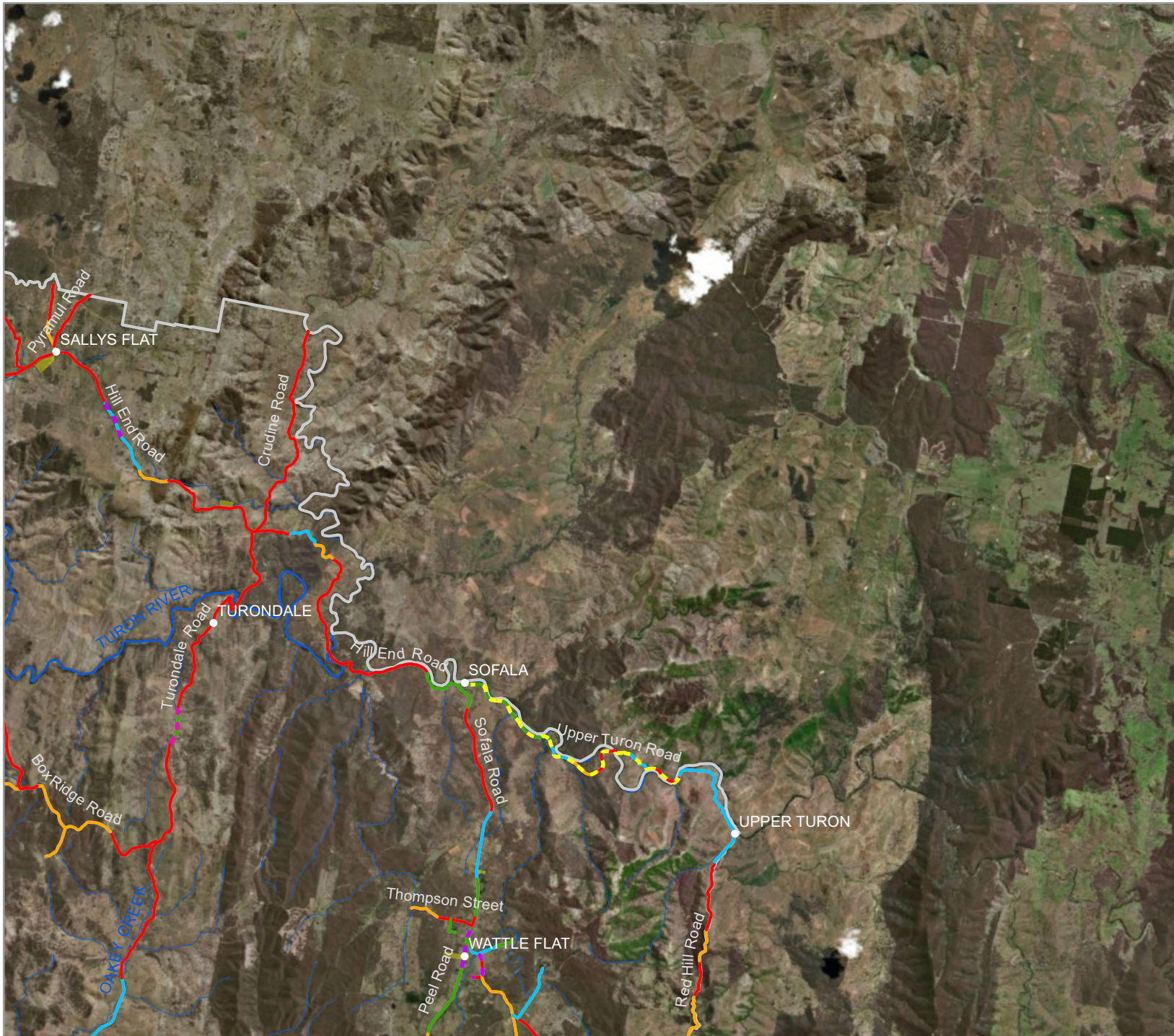
ngh environmental



CONSERVATION VALUES, PRIORITY SITES AND REHABILITATION SITES

Bathurst Regional Council Roadside Vegetation Management Plan 2017

MAP 2 OF 8



- Bathurst Regional LGA
- Water course
 - Major
 - Minor
- State Forests/Nature Reserves
- Travelling stock reserves
- Roadside conservation category
 - High - TEC or threatened species habitat
 - Medium
 - Degraded TEC
 - Low
- Priority sites
 - Threatened flora and fauna habitat
 - Priority weed control
- Rehabilitation sites
 - Sites that can contribute to connectivity
 - Degraded sites in high conservation value areas

Notes:
 - Data collected by nghenvironmental (2013 - 2015)
 - Location, waterway, State Forest and Nature Reserve data Copyright © Geoscience Australia
 - Travelling stock reserve data courtesy NSW Crown Lands
 - Base map Copyright © Esri and its data suppliers.



A4 @ 1:150000
 Ref: 17249 - BRC RVMP
 Author: DM 02/03/18

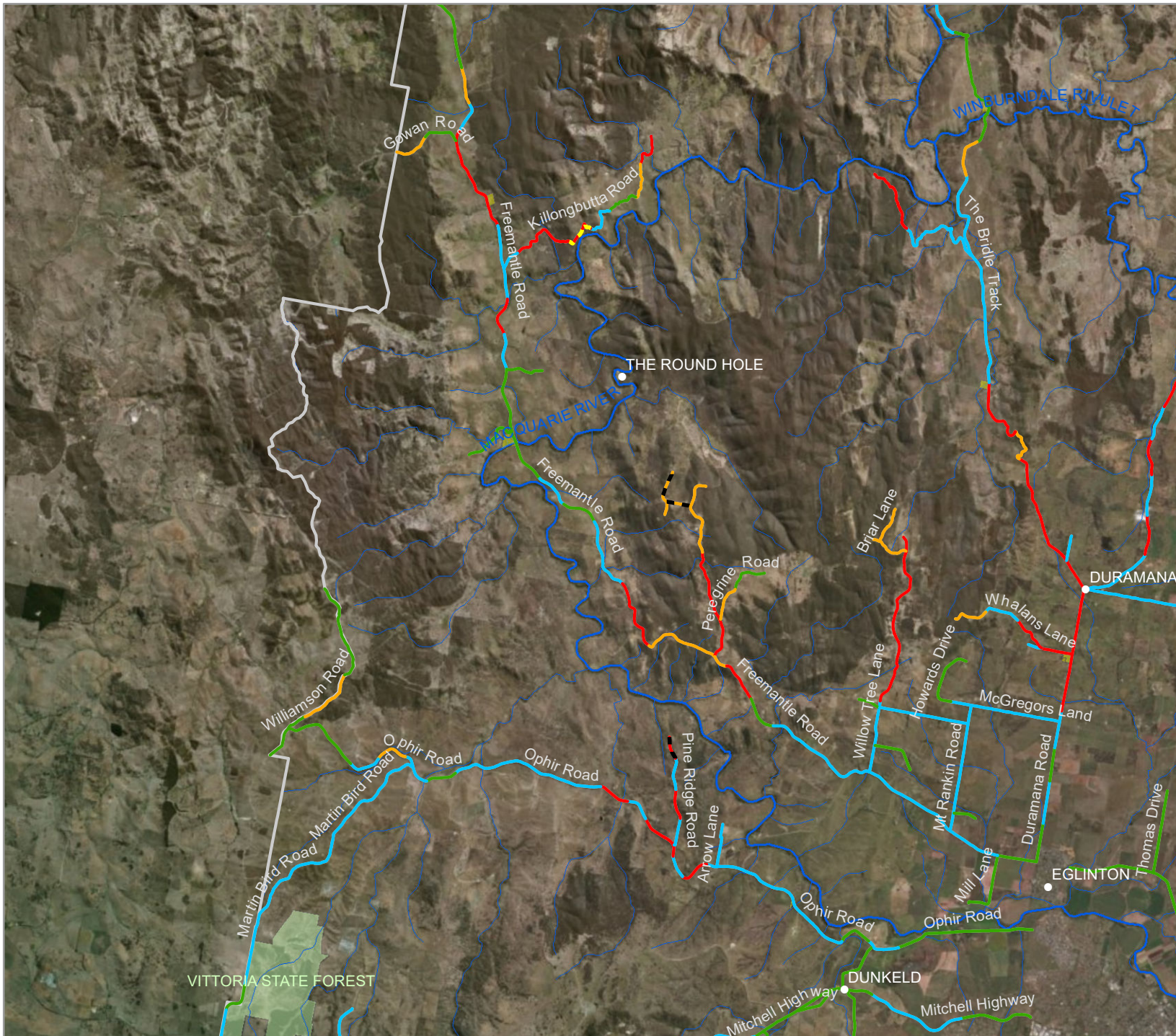
ngh environmental



CONSERVATION VALUES, PRIORITY SITES AND REHABILITATION SITES

Bathurst Regional Council Roadside Vegetation Management Plan 2017

MAP 3 OF 8



- Bathurst Regional LGA
- Water course
 - Major
 - Minor
- State Forests/Nature Reserves
- Travelling stock reserves
- Roadside conservation category
 - High - TEC or threatened species habitat
 - Medium
 - Degraded TEC
 - Low
- Priority sites
 - Threatened flora and fauna habitat
 - Priority weed control
- Rehabilitation sites
 - Sites that can contribute to connectivity
 - Degraded sites in high conservation value areas

Notes:
 - Data collected by ngenvironmental (2013 - 2015)
 - Location, waterway, State Forest and Nature Reserve data Copyright © Geoscience Australia
 - Travelling stock reserve data courtesy NSW Crown Lands
 - Base map Copyright © Esri and its data suppliers.



A4 @ 1:150000
 Ref: 17249 - BRC RVMP
 Author: DM 02/03/18

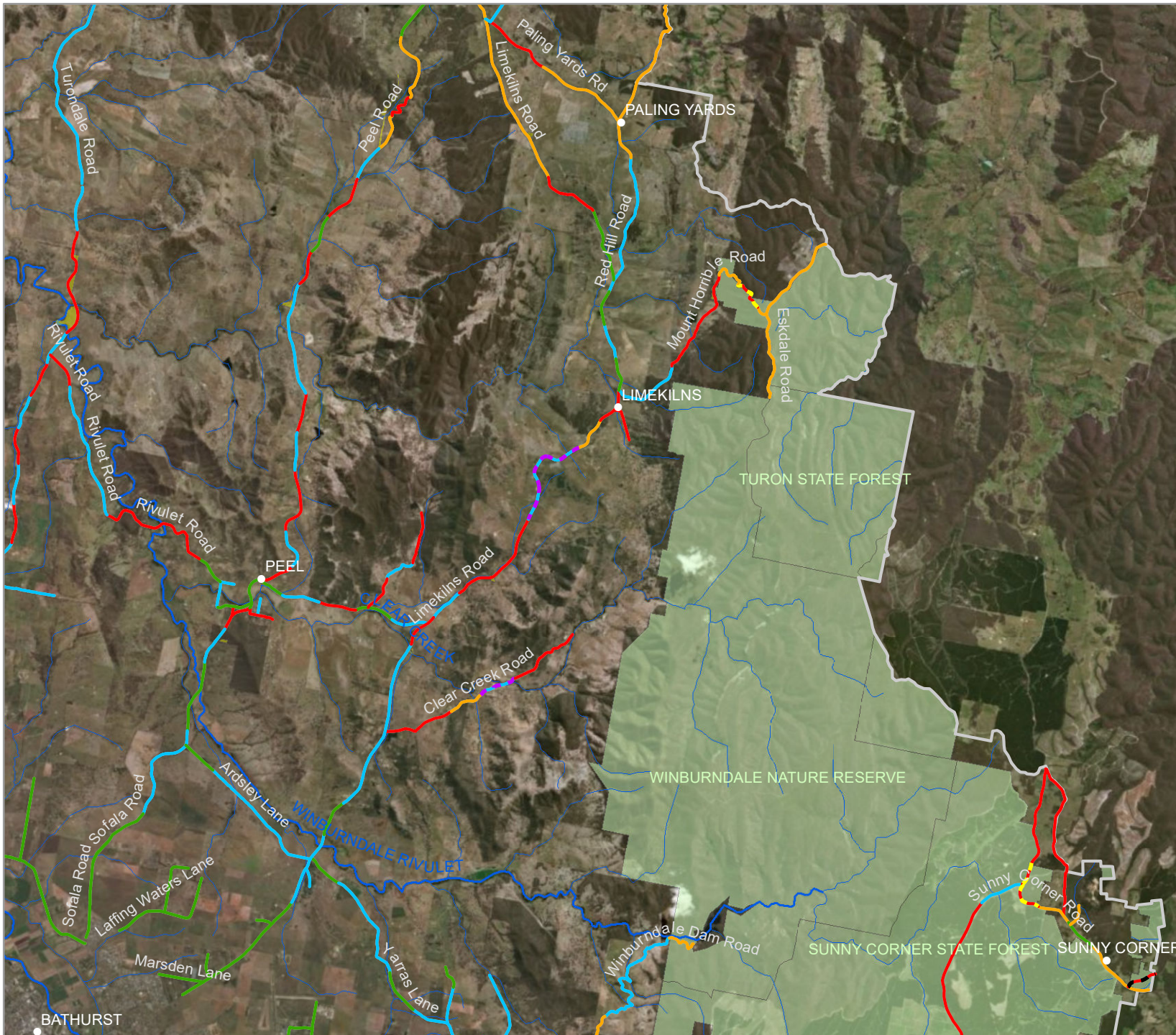
ngh environmental



CONSERVATION VALUES, PRIORITY SITES AND REHABILITATION SITES

Bathurst Regional Council Roadside Vegetation Management Plan 2017

MAP 4 OF 8



- Bathurst Regional LGA
- Water course
 - Major
 - Minor
- State Forests/Nature Reserves
- Travelling stock reserves
- Roadside conservation category
 - High - TEC or threatened species habitat
 - Medium
 - Degraded TEC
 - Low
- Priority sites
 - Threatened flora and fauna habitat
 - Priority weed control
- Rehabilitation sites
 - Sites that can contribute to connectivity
 - Degraded sites in high conservation value areas

Notes:
 - Data collected by ngenvironmental (2013 - 2015)
 - Location, waterway, State Forest and Nature Reserve data Copyright © Geoscience Australia
 - Travelling stock reserve data courtesy NSW Crown Lands
 - Base map Copyright © Esri and its data suppliers.

0 0.5 1 2 Kilometres



A4 @ 1:150000
 Ref: 17249 - BRC RVMP
 Author: DM 02/03/18

ngh environmental

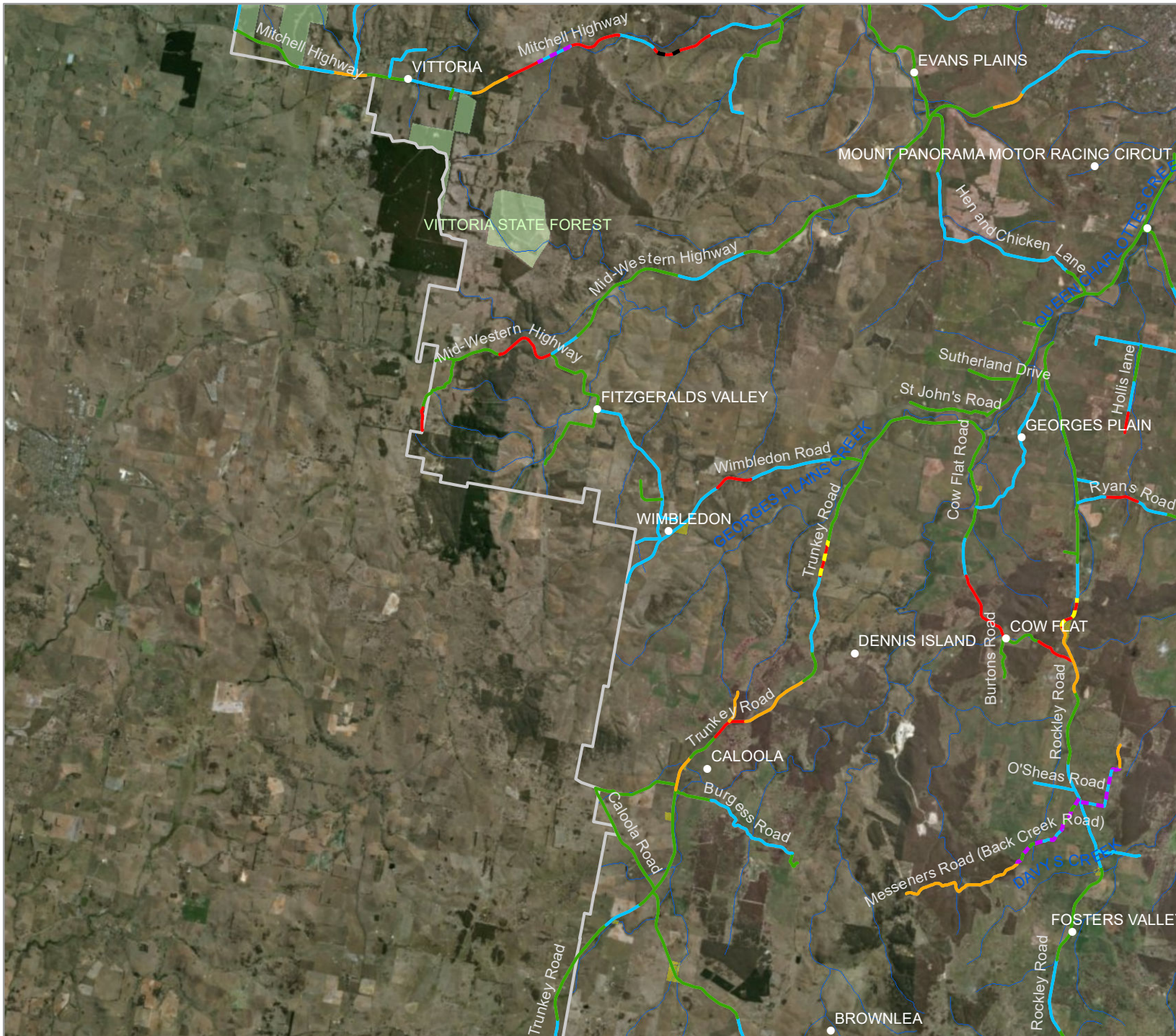


BATHURST

CONSERVATION VALUES, PRIORITY SITES AND REHABILITATION SITES

Bathurst Regional Council Roadside Vegetation Management Plan 2017

MAP 5 OF 8



- Bathurst Regional LGA
- Water course
 - Major
 - Minor
- State Forests/Nature Reserves
- Travelling stock reserves
- Roadside conservation category
 - High - TEC or threatened species habitat
 - Medium
 - Degraded TEC
 - Low
- Priority sites
 - Threatened flora and fauna habitat
 - Priority weed control
- Rehabilitation sites
 - Sites that can contribute to connectivity
 - Degraded sites in high conservation value areas

Notes:
 - Data collected by nghenvironmental (2013 - 2015)
 - Location, waterway, State Forest and Nature Reserve data Copyright © Geoscience Australia
 - Travelling stock reserve data courtesy NSW Crown Lands
 - Base map Copyright © Esri and its data suppliers.



A4 @ 1:150000
 Ref: 17249 - BRC RVMP
 Author: DM 02/03/18

ngh environmental





CONSERVATION VALUES, PRIORITY SITES AND REHABILITATION SITES

Bathurst Regional Council Roadside Vegetation Management Plan 2017

MAP 6 OF 8

- Bathurst Regional LGA
- Water course
 - Major
 - Minor
- State Forests/Nature Reserves
- Travelling stock reserves
- Roadside conservation category
 - High - TEC or threatened species habitat
 - Medium
 - Degraded TEC
 - Low
- Priority sites
 - Threatened flora and fauna habitat
 - Priority weed control
- Rehabilitation sites
 - Sites that can contribute to connectivity
 - Degraded sites in high conservation value areas

Notes:

- Data collected by nghenvironmental (2013 - 2015)
- Location, waterway, State Forest and Nature Reserve data Copyright © Geoscience Australia
- Travelling stock reserve data courtesy NSW Crown Lands
- Base map Copyright © Esri and its data suppliers.



A4 @ 1:150000
 Ref: 17249 - BRC RVMP
 Author: DM 02/03/18

ngh environmental

www.nghenvironmental.com.au

CONSERVATION VALUES, PRIORITY SITES AND REHABILITATION SITES

Bathurst Regional Council Roadside Vegetation Management Plan 2017

MAP 7 OF 8



- Bathurst Regional LGA
- Water course
 - Major
 - Minor
- State Forests/Nature Reserves
- Travelling stock reserves
- Roadside conservation category
 - High - TEC or threatened species habitat
 - Medium
 - Degraded TEC
 - Low
- Priority sites
 - Threatened flora and fauna habitat
 - Priority weed control
- Rehabilitation sites
 - Sites that can contribute to connectivity
 - Degraded sites in high conservation value areas

Notes:

- Data collected by nghenvironmental (2013 - 2015)
- Location, waterway, State Forest and Nature Reserve data Copyright © Geoscience Australia
- Travelling stock reserve data courtesy NSW Crown Lands
- Base map Copyright © Esri and its data suppliers.

0 0.5 1 2 Kilometres



A4 @ 1:150000
 Ref: 17249 - BRC RVMP
 Author: DM 02/03/18

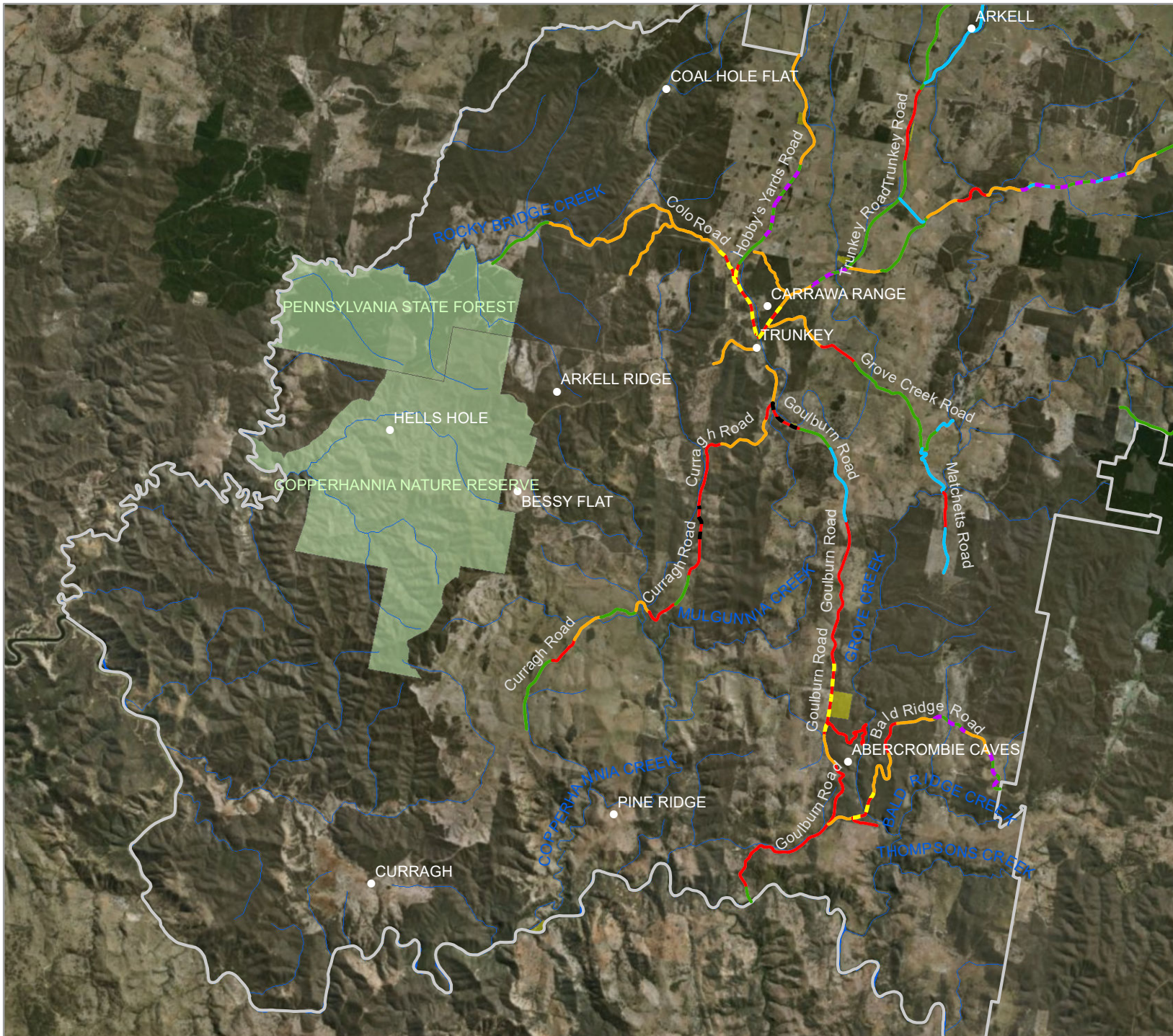
ngh environmental



CONSERVATION VALUES, PRIORITY SITES AND REHABILITATION SITES

Bathurst Regional Council Roadside Vegetation Management Plan 2017

MAP 8 OF 8



- Bathurst Regional LGA
- Water course
 - Major
 - Minor
- State Forests/Nature Reserves
- Travelling stock reserves
- Roadside conservation category
 - High - TEC or threatened species habitat
 - Medium
 - Degraded TEC
 - Low
- Priority sites
 - Threatened flora and fauna habitat
 - Priority weed control
- Rehabilitation sites
 - Sites that can contribute to connectivity
 - Degraded sites in high conservation value areas

Notes:
 - Data collected by nghenvironmental (2013 - 2015)
 - Location, waterway, State Forest and Nature Reserve data Copyright © Geoscience Australia
 - Travelling stock reserve data courtesy NSW Crown Lands
 - Base map Copyright © Esri and its data suppliers.



A4 @ 1:150000
 Ref: 17249 - BRC RVMP
 Author: DM 02/03/18

ngh environmental

