



ROCKLEY

Village Plan 2015



Image: Club House Hotel

Rockley Village Plan

The Bathurst Regional Local Government Area contains a number of villages. Village plans have been created for eight villages; Rockley, Wattle Flat, Hill End, Peel, Sofala, Sunny Corner, Trunkey Creek, and Yetholme. Each village has its own, unique history, community, and assets; however they also share commonalities in their past, present, and the opportunities and challenges that each will face in the future.

The Rockley Village Plan will act as a guide for future planning and development for the community. This plan identifies the preferred future, opportunities and challenges, and aligns with *Bathurst 2036 Community Strategic Plan* through its strategies and objectives which have been developed in consultation with the Rockley community.

Introducing Rockley

Rockley is 35 kilometres south of Bathurst and has an estimated population of 122 people usually resident in 63 dwellings. (2011 Census, ABS 2011).

The Wiradyuri people are acknowledged as the traditional custodians of the land where Rockley is situated. Wiradyuri people are of the goanna totem and are the people of the three rivers – the Wambool (Macquarie), the Kalari (Lachlan) and the Murrumbidgee. They have lived on these lands for more than 40,000 years.

History of the Village

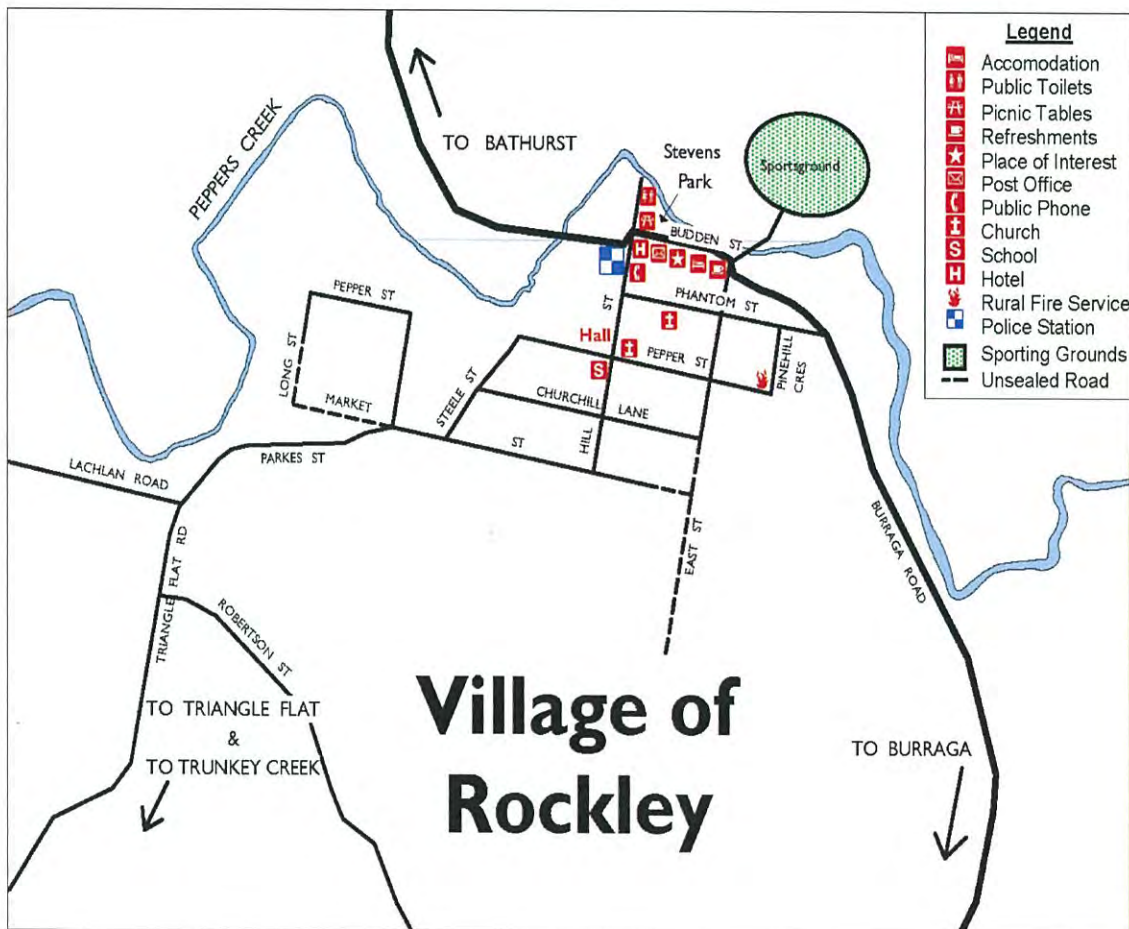
Rockley is one of the oldest settlements west of the Blue Mountains, the area having been discovered by George Evans in 1813. Land grants were first made to William Lawson in 1818. However, the present site of the village on Peppers Creek was originally kept as a government stock reserve. In 1829 when Captain Augustus Steel was granted a parcel of 1,920 acres he called his grant 'Rockley' after his birthplace in England. The township of Rockley was gazetted on 22 July 1851. Copper was found in the late 1840s with the Summer Hill copper mine opening in 1848. Settlers were also drawn to the area by the discovery of gold around the same time. The prosperity of that era is reflected in the substantial buildings that were erected and still stand in the village. *Extract from 'A Guide to Bathurst & Lithgow Regional Villages'*



Image: St Peter's Anglican Church



Image: Rockley School of Arts Hall



Present Day

Today the village of Rockley captures the essence of rural life at the turn of the 19th century leading to it being listed by the National Trust as an Historic Village. Peppers Creek provides a delightful backdrop for the beautiful Stevens Park right in the heart of the village. Visitors can enjoy a picnic in the park or watch the world go by from the verandah of the hotel or tea rooms.

Extract from 'A Guide to Bathurst & Lithgow Regional Villages'

Some of the community capital and infrastructure of Rockley includes:

- Rockley Public School.
- School of Arts Hall.
- Rockley Sportsground including Hall, Sportsground, Tennis Court, Cricket Practice Nets.
- Rural Fire Service.
- Rockley Mill & Stables Museum.
- Parkland including Play equipment.
- Public Toilets.
- Police Station.
- St Peter's Anglican Church
- St Patrick's Catholic Church
- Picnic Facilities.
- Waste Management Facility.
- Rockley Cemetery.
- Public Hotel.
- Community Groups; Rockley & District Community Association, Rockley Mill & Stables Museum Group, Rockley Rodeo Committee Inc.
- Bathurst Mobile Library service to the village.



Image: St Peter's Anglican Church



Image: Pepper's Creek

The Rockley Community

Information for this plan regarding 'what people love about Rockley' and 'the preferred future for Rockley' has been gathered using a variety of methods. This has included consultation with community members and school children held in 2010, annual Council meetings held in Rockley, as well as ongoing dialogue with village groups, associations, and individuals. The information that has been gathered through ongoing consultation has been used to develop the Rockley Village Plan as well as the objectives, strategies and actions contained in the Bathurst 2036 Community Strategic Plan.

What people love about Rockley

Residents of Rockley have identified the following key assets as important elements that make their community strong with its own sense of place. These assets were also identified as essential to maintain and enhance into the future.

Our People

The residents of Rockley identified the camaraderie of the people as one of its best assets. They felt that living in a small community gave everyone an opportunity to get to know one another and help each other out when needed. They felt it is a great community to raise a family with the local school and opportunities for the children to explore and participate in lots of outdoor activities.

Our Environment

The peace, quiet and rural charm of the village was identified as one of the advantages of living in Rockley. Of particular note was Pepper's Creek that runs through the village and provides a focus for residents and visitors. The community values the mix of natural, cultivated and man made environments that are unique to Rockley.

Our Community Groups, Organisations and Services

The existence of a range of community groups and organisations was also identified as important to the Rockley community. Residents were keen to support these groups by volunteering their time and resources. Groups and organisations that were identified included: Rockley Public School P&C Association, the Rockley & District Community Association, Rockley

Mill & Stables Museum Group, Rockley Rodeo Committee Inc, Rockley School of Arts Hall and Rural Fire Service.

Our Facilities

The importance of the community's facilities were highlighted as assets and important elements to the community. The residents identified Stevens Park and its proximately to the centre of the village as a great asset and a focal point for the community and visitors.

Our History

The long and varied history of the Rockley community, particularly its connections with the early settlers of NSW and the discovery of gold in the area, is something that the community prides itself on. It values the historic buildings and sites that make up the village and the oral histories that are maintained by long standing residents and their families. The Rockley Mill & Stables Museum and the volunteers that run it were identified as an asset and an important link to the history of the village.

Our Economy

The community identified its connection with the surrounding productive farmland and the rural economy as one of its strengths. This along with the hotel, school, and various small businesses and accommodation enterprises, provides opportunities for local employment which is vital to the sustainability of the community.



Image: Rockley Public School

The Preferred Future for Rockley

Residents saw the future of Rockley in ten years as a cohesive village community where people can enjoy a peaceful rural lifestyle including:

- A well maintained village that retains its community spirit;
- Continue to provide a school and police station for the residents;
- Improved community infrastructure and street scapes including tree planting, maintaining parks, footpaths, historic buildings, toilets, and roads;
- Manage future land development in consultation with the community;
- The provision of events and activities that would encourage people to interact and become involved in the community as well as attracting visitors;
- Encourage more small business to operate from the community, including shops;
- Encourage young people and families to live and be part of the community;
- Ensure the village remains a safe place to live including addressing the issue of road safety and trucks speeding through the village.

Actions are included in the Community Strategic Plan that seeks to deliver the preferred future for Rockley.



Image: Rockley School of Arts Hall

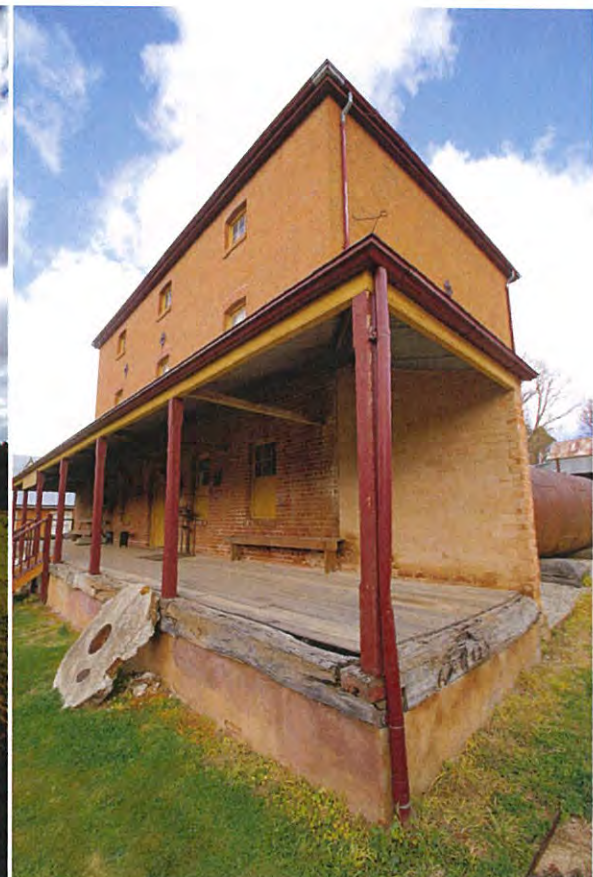
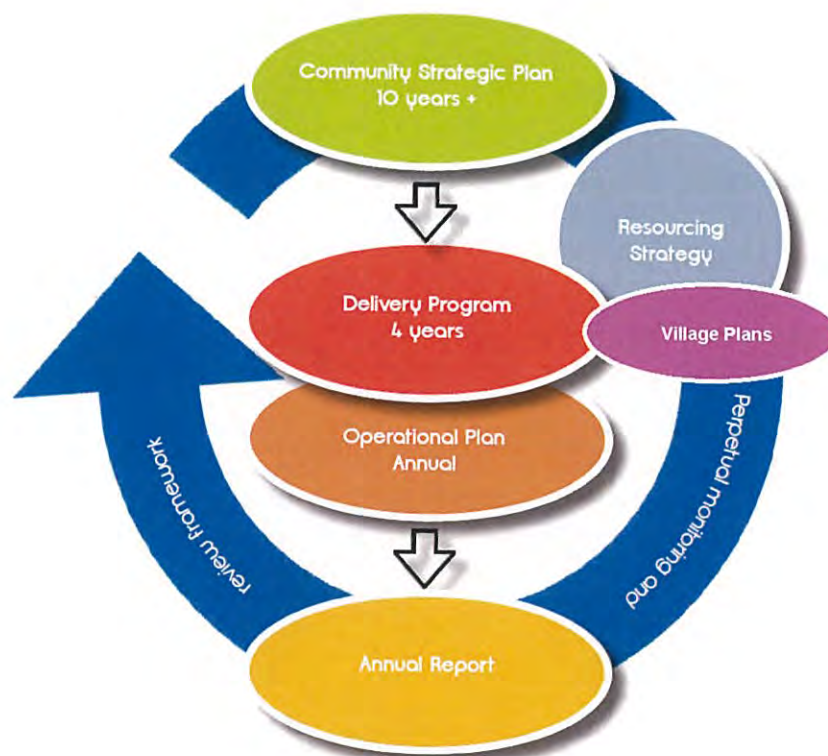


Image: Rockley Mill & Stables Museum

How this plan integrates with the Bathurst 2036 Community Strategic Plan

In February 2013 Bathurst Regional Council adopted *Bathurst 2036 Community Strategic Plan (CSP)* in line with the NSW Government requirements. Bathurst 2036 was developed using an asset based approach and outlines a number of objectives, strategies, and outcomes that represent the priorities for the whole Bathurst Region community. Village plans have been developed for eight villages aligning with the objectives and strategies identified in Bathurst 2036. The reporting and resourcing has also been incorporated into the CSP. The village plans include additional information relating to the unique qualities of each Village, and the views and ideas of the residents.



Further planning documents relating to the villages can be found on the Bathurst Regional Council's website: www.bathurst.nsw.gov.au including:

- Local Environment Plan (LEP) 2014
- Development Control Plan 2014
- Bathurst Regional Archaeological Management Plan 2012
- Bathurst Regional Heritage Strategy 2014 - 2017

Objective and Strategy

The objectives and strategies contained in the Bathurst 2036 Community Strategic Plan reflect the needs and strengths of the community as a whole. The strategies and actions identified in the plan are reviewed every four years through consultation with the community.

A specific objective (see below) that includes a range of strategies and outcomes has been specifically targeted to the opportunities and challenges identified for the Villages and rural settlements in the Bathurst Regional Local Government Area.

Objective 17: To encourage living, vibrant and growing villages and rural settlements

No.	Strategies	Key Partners
17.1	Implement the adopted Rural Strategy through the Local Environmental Plan to provide for the concentration of new living opportunities within and close to the existing villages and settlement areas and provide for ongoing major review in each 10 year period.	Government Agencies
17.2	Implement provisions within the Local Environmental Plan and Development Control Plan to provide a strong village system that includes housing choice, viable business and tourism opportunities, adequate transport systems and a concentration of community services.	Government Agencies
17.4	Continue to provide for and promote the village improvement program.	Government Agencies, Village Communities, Community Groups
17.5	Facilitate ongoing communication opportunities with each village locality.	Village communities, Community Groups
17.6	Provide outreach Council services to village and rural settlements where appropriate (e.g. library services, artistic programs, subsidised transport for children).	Village and Rural Communities
17.7	Advocate for the provision of relevant State and Federal Government services and facilities to village and rural locations (e.g. cultural, health and telecommunications).	State and Federal Government Agencies, Services Providers
17.8	Maintain infrastructure within and to rural and village locations in accordance with Council's Asset Management Plans.	Government Agencies
17.9	Continue to support new and existing cultural, community and recreational services and programs in rural and village locations.	Government Agencies, Village Communities, Community Groups, Service Providers
Community Outcomes		
Shared vision and community priorities for the individual villages.		
Establishment and maintenance of sustainable infrastructure and services.		
Good communication with village and rural settlement communities.		
Village growth is appropriate and sustainable.		

Bathurst Regional Council's Commitment to Rockley

Since the amalgamation of Bathurst City Council and Evans Shire Council in 2004, Bathurst Regional Council has committed a range of resources to enhancing the amenities of Rockley. These have included support for community celebrations, through to developing and maintaining infrastructure in roads and community facilities.

The following outlines funding allocated to the Rockley community through the Village Improvement Program (VIP). This program provides funding to villages to develop infrastructure based on the annual allocation as determined by Council.

Year	Project	Funding
2005/06	Heating/air conditioning for main hall and club room	\$12,000
	Disabled toilet, improve toilet block - School of Arts	\$23,200
2006/07	School of Arts Hall - improved water facility	\$6,000
2007/08	School of Arts Hall - foyer upgrade	\$10,000
2008/09	Redevelopment of Tennis Courts, Government Fees, Contingency	\$85,000
2009/10	Cricket nets	\$34,000
2010/11	Not applicable	0
2011/12	Not applicable	0
2012/13	Rockley & District Community Association – School of Arts flooring project	\$6,468
2013/14	Rockley & District Community Association – soup bowls, soup spoons, soup kettles & microwave oven	\$712
	Rockley Sports & Recreation Association – repair/replace air conditioner in meeting room, replace damaged/stained hand basins in toilets	\$712
Total		\$178,092



Image: Rockley Mill Museum



Image: Abercrombie Hall

Other Village Works Undertaken in Rockley

In addition to the Village Improvement Program, Bathurst Regional Council has undertaken other works to improve the amenities of Rockley and its surrounding area, including;

Year	Project	Funding
Roads		
2006/07	Rockley Road 12.920 - 14.500 km	\$195,000
2007/08	Rockley Road 18.130 - 20.420 km	\$195,000
2008/09	Rockley Road 17.960 - 20.420 km	\$210,000
2009/10	Rockley Road 21.000 - 22.500 km	\$170,000
2012/13	Heavy patching due to logging truck damage	\$350,000
Reseals		
2006/07	Rockley Road 11.230 - 14.015 km	\$56,244
2006/07	Lachlan Road 0.000 - 3.200 km	\$55,769
2007/08	Rockley Road 14.015 - 16.338 km	\$40,973
2007/08	Budden Street	\$13,224
2007/08	Triangle Flat Road	\$41,511
2008/09	Triangle Flat Road	\$20,406
2009/10	Rockley Road 16.338 - 18.000 km	\$30,000
2009/10	Rockley Road 18.000 - 22.500 km	\$94,432
2010/11	Rockley Road 22.500 - 24.168 km	\$59,840
2011/12	Rockley Road 24.168 - 34.300 km	\$5,781
2014/15	Rockley Road 8.543 - 10.240 km	\$642,411
Other Projects		
2007/08	Rockley Transfer Station	\$160,508
2012/13	Hill Street Kerb and Gutter - Install drainage and K&G	\$45,138
2012/13	Stevens Park toilet block - Replacement of toilet block	\$165,000
Annually	Maintenance	\$84,000
Road Construction Projects		
2006/07	Rockley Cemetery Road Design & construct	\$65,000
2009/10	Lachlan Road construct & seal	\$653,000
2010/11	Dog Rocks Road construct & seal	\$365,757
2011/12	Common Road construct & seal	\$474,490
2013/14	Lachlan Road realignment 6 – 7 km	\$86,772
Total Money spent since 2006		\$4,280,256

Ongoing Commitment to Rockley

Bathurst Regional Council values all members of the broader community. Council has made an ongoing commitment to continue to support Rockley through ongoing consultation and investment into the infrastructure and amenities of the village. A strategic and advocacy approach will be maintained reflected in the strategies, objectives, and outcomes identified in *Bathurst 2036 Community Strategic Plan*.



Image: side lane adjacent to Club House Hotel



Image: Rockley Rodeo

Attachments

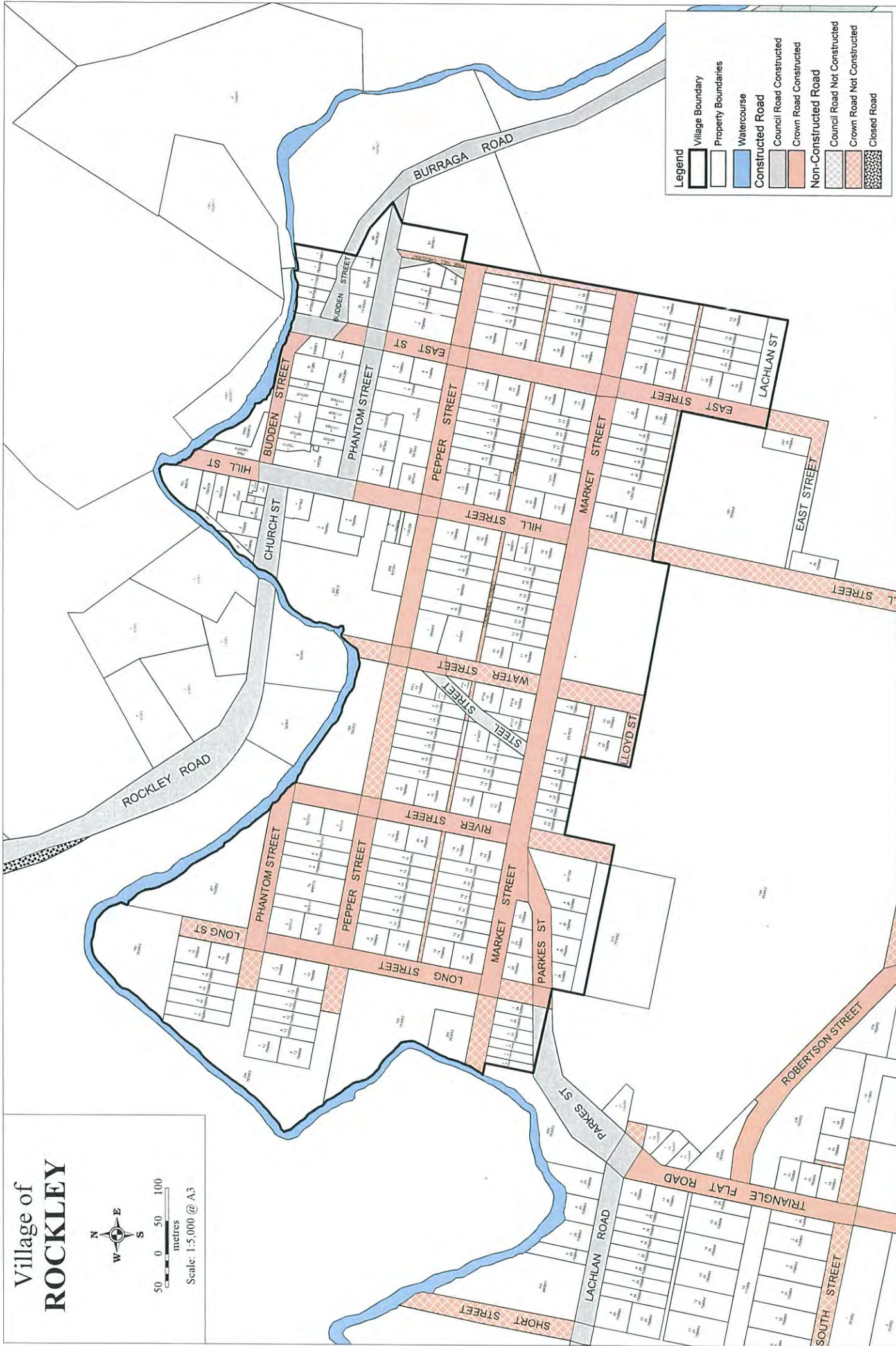
- 1 Village Map, including village and property boundaries, and crown roads.
- 2 Aerial Village Map, including village and property boundaries.
- 3 Development Control Plan 2014.

Village of ROCKLEY



50 0 50 100
metres

Scale: 1:5,000 @ A3



Badhurst Regional Council expressly disclaims all liability for errors or omissions of any kind whatsoever, or any loss, damage or other consequence which may arise from any person relying on information in this Plan. Note: The colours on this Plan do not indicate landuse zones under the Badhurst Regional Local Environment Plan 2014.

Date 10/04/2015

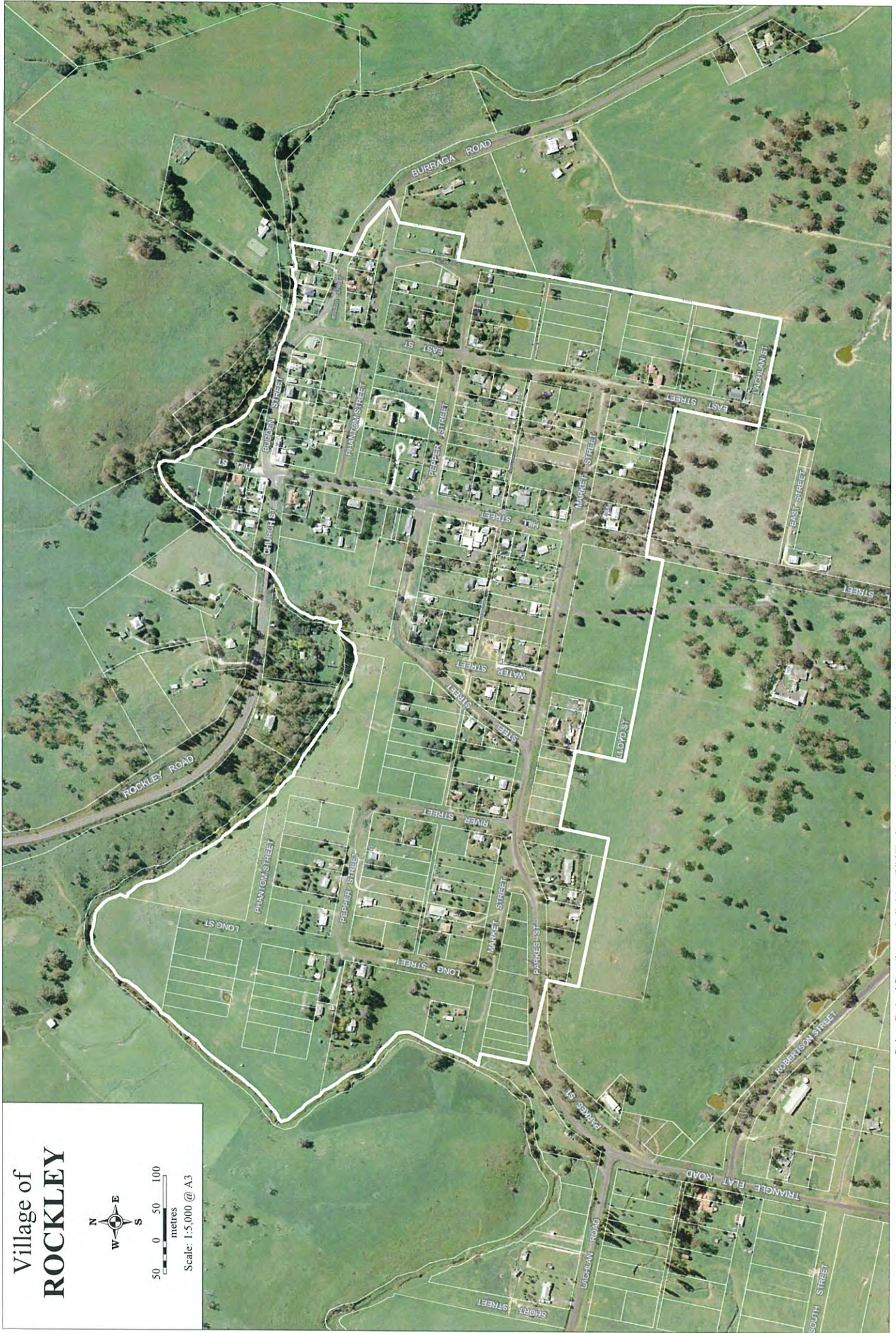
"Base Maps: © Department of Lands 2006"

Village of ROCKLEY



50 0 50 100
metres

Scale: 1:5,000 @ A3



Bathurst Regional Council expressly disclaims all liability for errors or omissions of any kind whatsoever, or any loss, damage or other consequence which may arise from any person relying on information in this Plan

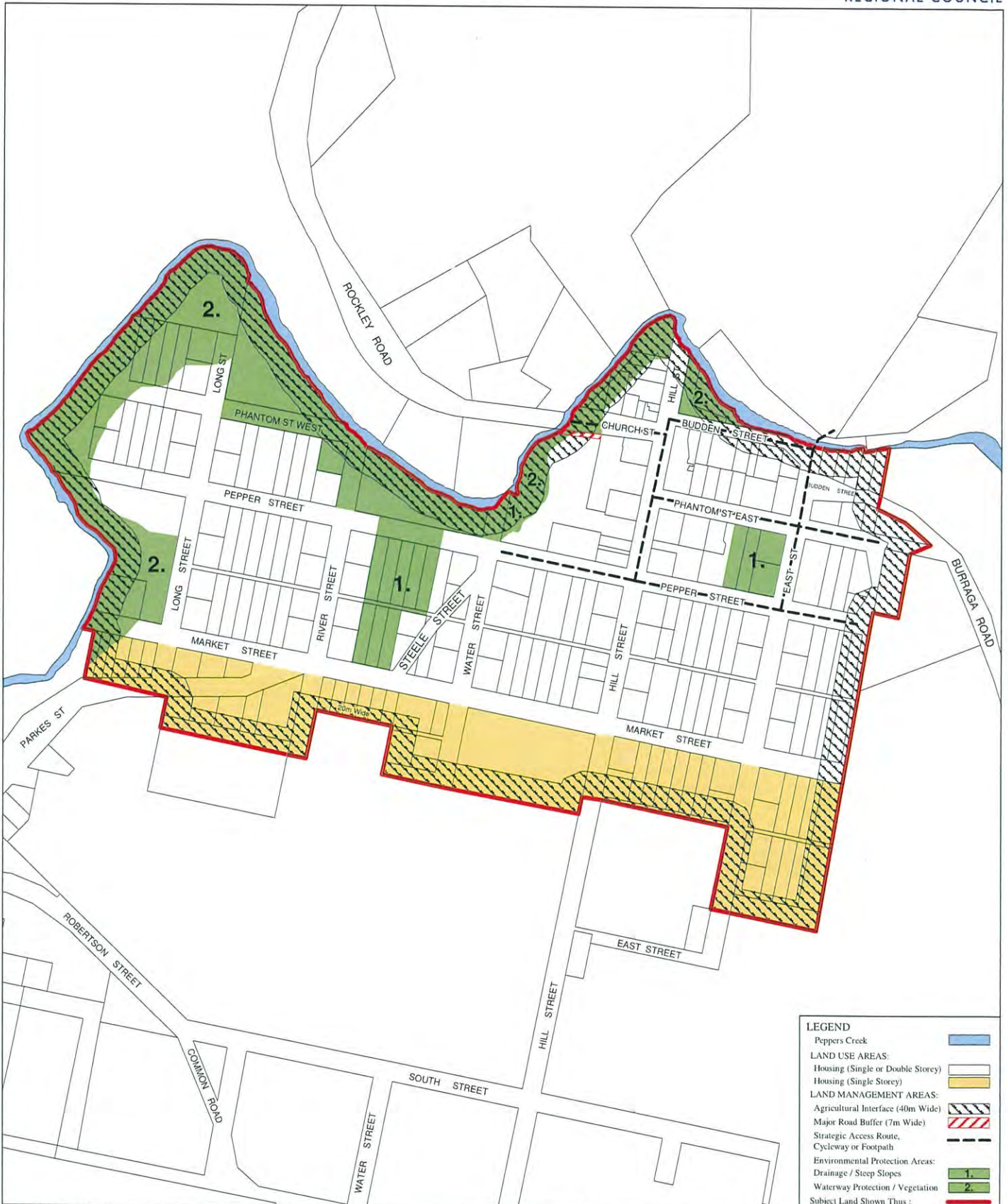
Note: The colours on this Plan do not indicate landuse zones under the Bathurst Regional Local Environment Plan 2014.

Date 10/04/2015

"Base Maps. © Department of Lands 2006"

BATHURST REGIONAL DEVELOPMENT CONTROL PLAN 2014

MAP No. 24 - ROCKLEY



LEGEND

- Peppers Creek
- LAND USE AREAS:**
 - Housing (Single or Double Storey)
 - Housing (Single Storey)
- LAND MANAGEMENT AREAS:**
 - Agricultural Interface (40m Wide)
 - Major Road Buffer (7m Wide)
 - Strategic Access Route, Cycleway or Footpath
- Environmental Protection Areas:**
 - Drainage / Steep Slopes
 - Waterway Protection / Vegetation
- Subject Land Shown Thus:

ADOPTION DATE:		
AMENDMENTS		
No.	DATE.	DESCRIPTION.

LOCALITY: ROCKLEY

ENVIRONMENTAL PLANNING AND ASSESSMENT ACT, 1979

BATHURST REGIONAL LOCAL GOVERNMENT AREA.

SCALE: 1:8,000

NORTH

CERTIFIED IN ACCORDANCE WITH THE ENVIRONMENTAL PLANNING AND ASSESSMENT ACT 1979 AND REGULATIONS

GENERAL MANAGER. DATE: