



TRUNKEY CREEK

Village Plan 2015



Image: Black Stump Hotel

Trunkey Creek Village Plan

The Bathurst Regional Local Government Area contains a number of villages. Village plans have been created for eight villages; Trunkey Creek, Wattle Flat, Hill End, Peel, Rockley, Sofala, Sunny Corner, and Yetholme. Each village has its own, unique history, community, and assets; however they also share commonalities in their past, present, and the opportunities and challenges that each will face in the future.

The Trunkey Creek Village Plan will act as a guide for future planning and development for the community. This plan identifies the preferred future, opportunities and challenges, and aligns with *Bathurst 2036 Community Strategic Plan* through its strategies and objectives which have been developed in consultation with the Trunkey Creek community.

Introducing Trunkey Creek

Trunkey Creek is 56 kilometres south of Bathurst and has an estimated population of 62 people usually resident in 37 dwellings. (2011 Census, ABS 2011)

The Wiradyuri people are acknowledged as the traditional custodians of the land where Trunkey Creek is situated. Wiradyuri people are of the goanna totem and are the people of the three rivers – the Wambool (Macquarie), the Kalari (Lachlan) and the Murrumbidgee. They have lived on these lands for more than 40,000 years.

History of the Village

Gold may have been found in this area as early as 1851, but it was not until 1868 that large quartz reefs were discovered, starting a gold rush to the area. The village is believed to have originally been named after a prospector or shepherd who was nicknamed 'Trunkey' because of his particularly long nose, hence 'Trunkey's Creek'. In 1873 it was officially proclaimed 'Arthur', a name retained until 1988 when it was changed to 'Trunkey'. In 2003 the official name reverted to 'Trunkey Creek', a name that locals had always used. *Extract from 'A Guide to Bathurst & Lithgow Regional Villages'*

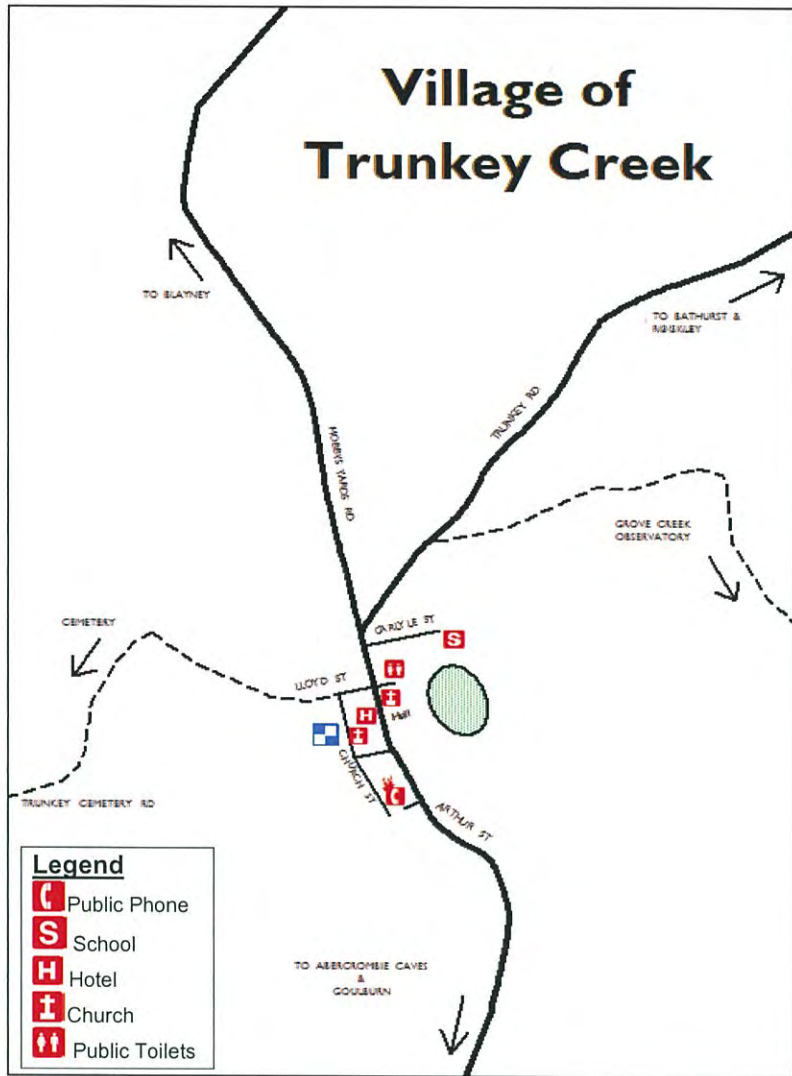


Image: Historic building

Present Day

Today Trunkey Creek is a tiny rural village on the road to Goulburn with a hotel, school, and old wooden churches. Remnants of a bygone era can be seen in the old buildings, the crumbling mud cottages, brick chimneys, and mullock heaps. However, the region produces some of Australia's top quality merino wool and the village holds a festival each year that highlights a tradition established in the 1820's by awarding the Australian Champion fleece. *Extract from 'A Guide to Bathurst & Lithgow Regional Villages'*

Some of the community capital and infrastructure of Trunkey Creek includes:

- Trunkey Creek Public School.
- Rural Fire Service.
- Showground.
- Recreation Ground.
- Community Hall.
- Tennis Court/s.
- Children's Playground.
- BBQ and Picnic Facilities.
- Bus Shelters.
- Public Toilets.
- Water Supply bore.
- Cemetery (historical).
- Public Hotel.
- Anglican and Presbyterian Churches.
- Bathurst Mobile Library service to the village.
- Waste Management Facility.
- Trunkey Creek Progress Association.



Image: Church of the Holy Spirit, Anglican Church

The Trunkey Creek Community

Information for this plan regarding 'what people love about Trunkey Creek' and 'the preferred future for Trunkey Creek' has been gathered using a variety of methods. This has included consultation with community members and school children held in 2010, annual Council meetings held in Trunkey Creek, as well as ongoing dialogue with village groups, associations and individuals. The information that has been gathered through ongoing consultation has been used to develop the Trunkey Creek Village Plan as well as the objectives, strategies, and actions contained in the Bathurst 2036 Community Strategic Plan.

What people love about Trunkey Creek

Residents of Trunkey Creek have identified the following key assets as important elements that make their community strong with its own sense of place. These assets were also identified as essential to maintain and enhance into the future.

Our People

The Trunkey Creek community identified their community as close-knit, friendly with cooperative people that work together to create a strong community atmosphere. They loved the quiet village lifestyle and reflected that it was a honest and safe place to raise their families.

Our Environment

The rural setting for the village of Trunkey Creek was another important asset to this community. The local natural resources including good grazing land and mineral resources were identified as a strength for the sustainability of the community. People also valued the local wildlife and flora and the opportunity to live in a community surrounded by nature.

Our Community Groups, Organisations and Services

The existence of a range of community groups and organisations was also identified as important to the Trunkey Creek community. Residents were keen to support these groups by volunteering their time and resources. The provision of a local school, police station and waste management station that included recycling was also valued in the community.

Our Facilities

The importance of the community's facilities were highlighted as assets and important elements for the community. The provision of regular church services and a local cemetery which is maintained by the community was also recognised as significant.

Our History

The long and varied history of the community particularly its connection to long term agricultural production is something that the community prides itself on. It values the historic buildings and sites that make up the village and the oral histories that are maintained by long standing residents and their families.

Our Economy

The community identified the proximity of the village to shopping and services in Bathurst and Blayney as a strength. The residents acknowledge and appreciated the role of tourism with attractions such as Abercrombie Caves and recreational activities such as camping along the river. The strong ties to the surrounding agricultural economy and Trunkey Creek's role in supporting this, was emphasised.



Image: Historic building

The Preferred Future for Trunkey Creek

Residents saw the future of Trunkey Creek in ten years as a cohesive village community where people can enjoy a peaceful rural lifestyle including:

- Enhanced infrastructure and basic facilities that meet the needs of the community, including improved and well-maintained roads, and adequate mobile phone coverage and internet access;
- The preservation of the village as a functional community with active organisations and enhanced social connections;
- Existing facilities would be thriving, particularly the school, the hotel, and the police station would be maintained;
- Mineral industries in the region would be well-established, attracting families to the community and supporting local facilities such as a community bus and the school;
- A general store would be re-established where residents could buy fuel, basic items, and have a coffee. The store would attract tourists and encourage passing traffic to stop;
- The environment would be improved including clearing the creeks, and weeds would be controlled;
- Tourism would be encouraged and expanded where visitors would see Trunkey Creek as a destination to visit, not just a community to pass through on the way to some other attraction;
- Vacant blocks would be built on and houses in the village and district would be occupied by new residents employed in mining and other jobs.

Actions are included in the Community Strategic Plan that seeks to deliver on the preferred future for Trunkey Creek.



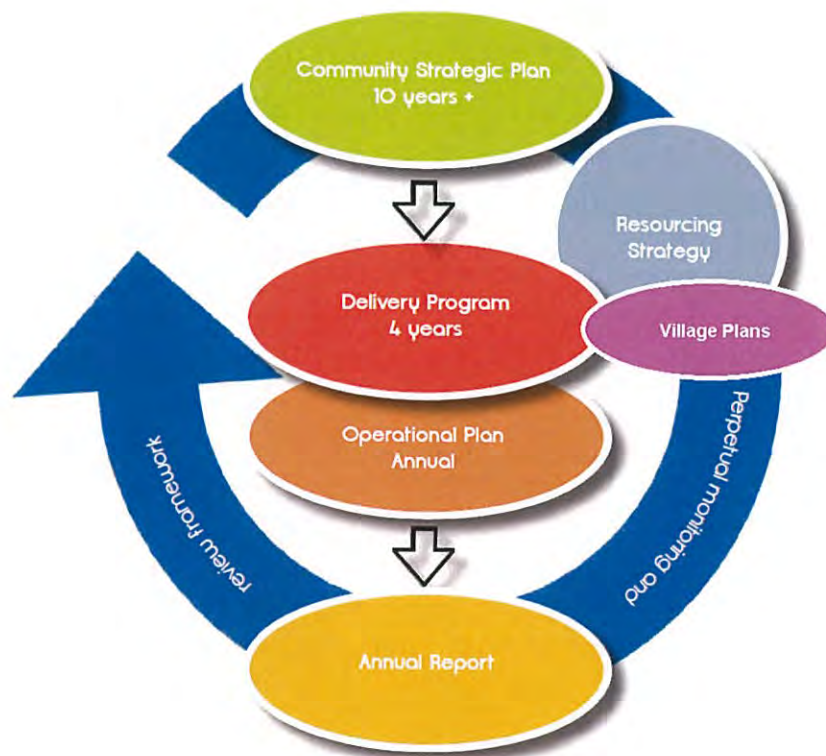
Image: Historic building



Image: Church

How this plan integrates with the Bathurst 2036 Community Strategic Plan

In February 2013 Bathurst Regional Council adopted *Bathurst 2036 Community Strategic Plan (CSP)* in line with the NSW Government requirements. Bathurst 2036 was developed using an asset based approach and outlines a number of objectives, strategies and outcomes that represent the priorities for the whole Bathurst Region community. Village plans have been developed for eight villages aligning with the objectives and strategies identified in Bathurst 2036. The reporting and resourcing has also been incorporated into the CSP. The village plans include additional information relating to the unique qualities of each Village, and the views and ideas of the residents.



Further planning documents relating to the villages can be found on the Bathurst Regional Council's website: www.bathurst.nsw.gov.au including:

- Local Environment Plan (LEP) 2014
- Development Control Plan 2014
- Bathurst Regional Archaeological Management Plan 2012
- Bathurst Regional Heritage Strategy 2014 - 2017

Objective and Strategy

The objectives and strategies contained in the Bathurst 2036 Community Strategic Plan reflect the needs and strengths of the community as a whole. The strategies and actions identified in the plan are reviewed every four years through consultation with the community.

A specific objective (see below) that includes a range of strategies and outcomes has been specifically targeted to the opportunities and challenges identified for the Villages and rural settlements in the Bathurst Regional Local Government Area.

Objective 17: To encourage living, vibrant and growing villages and rural settlements

No.	Strategies	Key Partners
17.1	Implement the adopted Rural Strategy through the Local Environmental Plan to provide for the concentration of new living opportunities within and close to the existing villages and settlement areas and provide for ongoing major review in each 10 year period.	Government Agencies
17.2	Implement provisions within the Local Environmental Plan and Development Control Plan to provide a strong village system that includes housing choice, viable business and tourism opportunities, adequate transport systems and a concentration of community services.	Government Agencies
17.4	Continue to provide for and promote the village improvement program.	Government Agencies, Village Communities, Community Groups
17.5	Facilitate ongoing communication opportunities with each village locality.	Village communities, Community Groups
17.6	Provide outreach Council services to village and rural settlements where appropriate (e.g. library services, artistic programs, subsidised transport for children).	Village and Rural Communities
17.7	Advocate for the provision of relevant State and Federal Government services and facilities to village and rural locations (e.g. cultural, health and telecommunications).	State and Federal Government Agencies, Services Providers
17.8	Maintain infrastructure within and to rural and village locations in accordance with Council's Asset Management Plans.	Government Agencies
17.9	Continue to support new and existing cultural, community and recreational services and programs in rural and village locations.	Government Agencies, Village Communities, Community Groups, Service Providers
Community Outcomes		
Shared vision and community priorities for the individual villages.		
Establishment and maintenance of sustainable infrastructure and services.		
Good communication with village and rural settlement communities.		
Village growth is appropriate and sustainable.		

Bathurst Regional Council's Commitment to Trunkey Creek

Since the amalgamation of Bathurst City Council and Evans Shire Council in 2004, Bathurst Regional Council has committed a range of resources to enhancing the amenities of Trunkey Creek. These have included support for community celebrations through to developing and maintaining infrastructure in roads and community facilities.

The following outlines funding allocated to the Trunkey Creek community through the Village Improvement Program (VIP). This program provides funding to villages to develop infrastructure based on the annual allocation as determined by Council.

Year	Project	Funding
2005/06	Construction of an all-weather multi-use court at Trunkey Creek Recreation Reserve.	\$44,500
2006/07	Extension to awning (front of hall) and build a storage shed. Upgrade public toilets on Recreation Reserve	\$25,185
2007/08	Epicentre - tiling and floor. Tennis Court - shelter Anzac Park - fencing, shade over playground, table/seat shade.	\$30,540
2008/09	Anzac Park - sit and shade Hall - replace ceiling & walls in kitchen. Recreation ground - replace stalls	\$22,525
2009/10	External painting of hall Re-roof tennis shed Concrete stall floors at recreation ground	\$23,790
2010/11	Not Applicable	0
2011/12	Trunkey Creek Progress Association – upgrade kitchen doors to be fireproof and improve security of Showground kitchen Trunkey Creek Progress Association – Complete concreting stalls and paths Trunkey Creek Progress Association – Upgrade three old refrigerators with one triple glass door upright refrigerator	\$4,250 \$2,125 \$3,699
2012/13	Trunkey Creek Progress Association – Shade/weather protection shelter at Showground	\$9,000
2013/14	Trunkey Creek Progress Association – Replacement of double door fridge in kitchen at Community Hall	\$1,425
Total		\$167,039

Other Village Works Undertaken in Trunkey Creek

In addition to the Village Improvement Program, Bathurst Regional Council has undertaken other works to improve the amenities of Trunkey Creek and its surrounding area, including;

Year	Project	Funding
Roads		
2008/09	Reconstruct and seal Goulburn Road 71.2 – 73.2 km	\$650,000
	Reconstruct and seal Goulburn Road 68.1 – 69.1 km	\$780,000
2011/12	Reconstruct Hobbys Yards Road 1.4 km	\$262,706
2012/13	Reconstruct and seal Goulburn Road 69.1 – 70.1 km	\$679,747
2014/15	Realignment of Goulburn Road	\$1,011,255
Reseals		
2011	Reseal Village Streets (Chard, Lowe, Church, Lloyd, Arthur, Carlyle)	\$23,493
Goulburn Rd		
2010	Reseal Goulburn Road 4.9 km	\$164,549
2012	Reseal Goulburn Road 1.5 km	\$47,812
2013	Reseal Goulburn Road 800 m	\$22,085
Hobbys Yard Rd		
2008/09	Reseal Hobbys Yards Road 2.6 km	\$46,175
2009/10	Reseal Hobbys Yards Road 2 km	\$33,478
2011/12	Reseal Hobbys Yards Road 1.1 km	\$33,525
2012/13	Reseal Hobbys Yards Road 1.5 km	\$35,600
Trunkey Road (Between Old Trunk Road and Trunkey Village)		
2006	Reseal Trunkey Road 5.5 km	\$117,178
2008	Reseal Trunkey Road 3 km	\$84,350
Other Projects		
2005/06	Trunkey Play equipment	\$11,651
2006/07	Trunkey Waste Management Station Rehabilitation	\$100,000
2007/08	Trail Const. & Equipment storage	\$20,900
	Construction of new transfer station	\$160,508
Total		\$4,285,012



Image: Goulburn Road, Trunkey Creek

Ongoing Commitment to Trunkey Creek

Bathurst Regional Council values all members of the broader community. Council has made an ongoing commitment to continue to support Trunkey Creek through ongoing consultation and investment into the infrastructure and amenities of the village. A strategic and advocacy approach will be maintained reflected in the strategies, objectives, and outcomes identified in *Bathurst 2036 Community Strategic Plan*.



Image: Old General Store



Image: Church of the Holy Spirit, Anglican Church

Attachments

- 1 Village Map, including village and property boundaries, and crown roads.
- 2 Aerial Village Map, including village and property boundaries.
- 3 Development Control Plan 2014.

Village of TRUNKY CREEK



50 0 50 100
metres

Scale: 1:5,000 @ A3



Legend

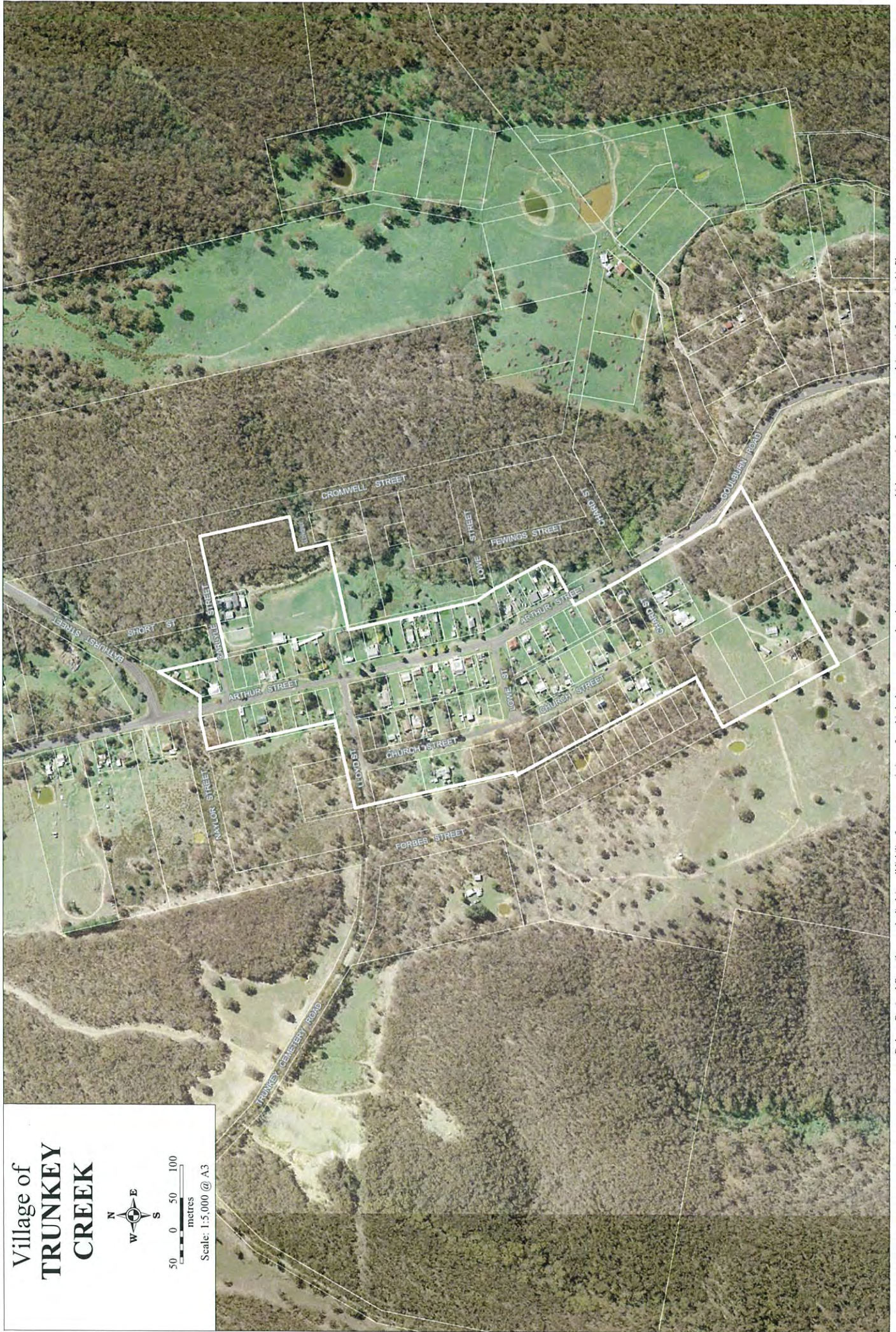
- Village Boundary
- Property Boundaries
- Constructed Road**
 - Council Road Constructed
 - Crown Road Constructed
- Non-Constructed Road**
 - Council Road Not Constructed
 - Crown Road Not Constructed
 - Closed Road

Bathurst Regional Council expressly disclaims all liability for errors or omissions of any kind whatsoever, or any loss, damage or other consequence which may arise from any person relying on information in this Plan. The colours on this Plan do not indicate landuse zones under the Bathurst Regional Local Environment Plan 2014.

Village of TRUNKY CREEK

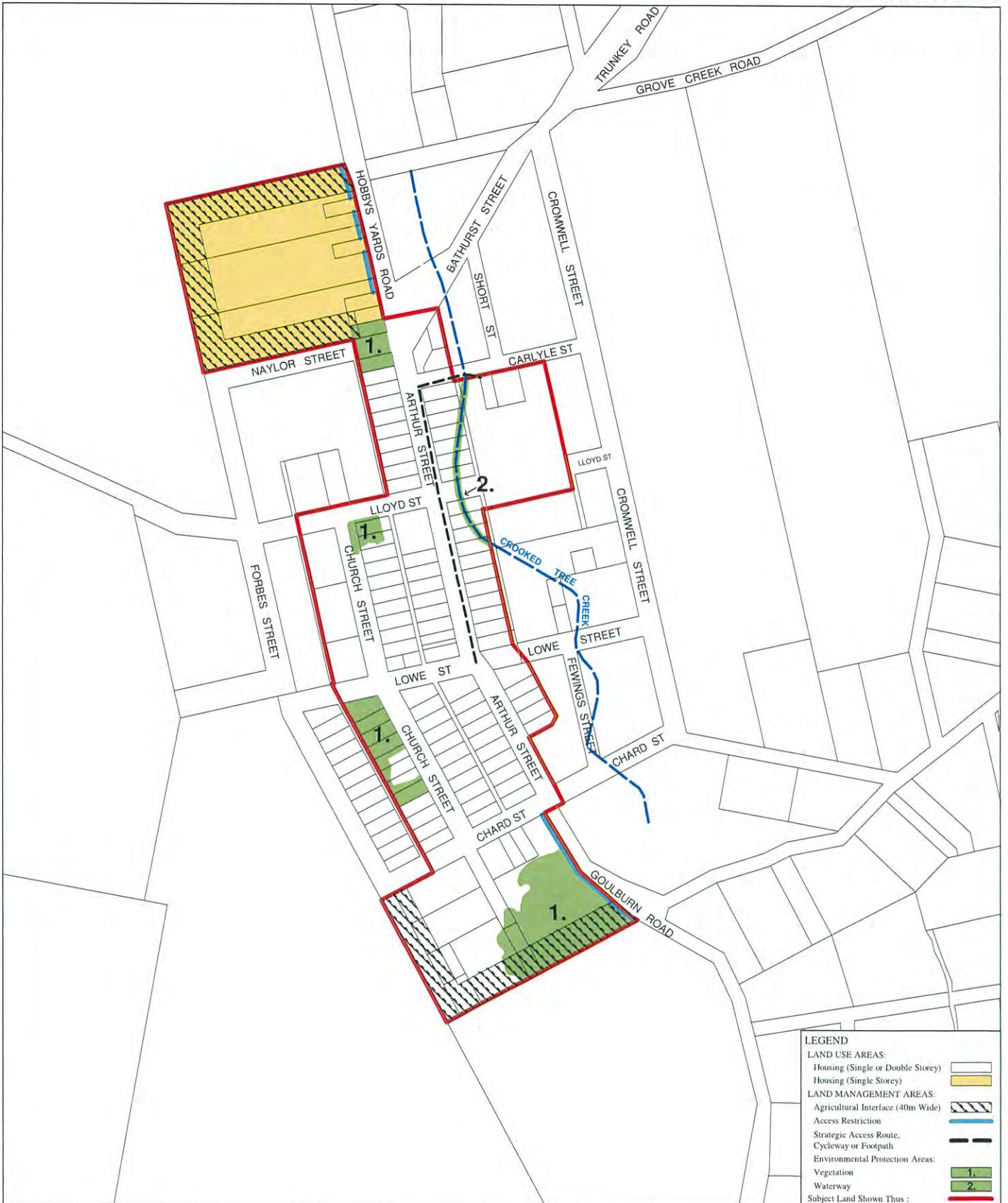


Scale: 1:5,000 @ A3



BATHURST REGIONAL DEVELOPMENT CONTROL PLAN 2014

MAP No. 16 - TRUNKY CREEK



LEGEND	
LAND USE AREAS:	
Housing (Single or Double Storey)	[White box]
Housing (Single Storey)	[Yellow box]
LAND MANAGEMENT AREAS:	
Agricultural Interface (40m Wide)	[Diagonal hatching]
Access Restriction	[Blue line]
Strategic Access Route, Cycleway or Footpath	[Black dashed line]
Environmental Protection Areas:	
Vegetation	[Green box with '1.']
Waterway	[Blue box with '2.']
Subject Land Shown Thus:	[Red outline]

ADOPTION DATE:		
AMENDMENTS		
No.	DATE.	DESCRIPTION.

LOCALITY: TRUNKY

ENVIRONMENTAL PLANNING AND ASSESSMENT ACT, 1979

BATHURST REGIONAL LOCAL GOVERNMENT AREA.

SCALE: 1:7,500

NORTH

CERTIFIED IN ACCORDANCE WITH THE ENVIRONMENTAL PLANNING AND ASSESSMENT ACT 1979 AND REGULATIONS

[Signature]

GENERAL MANAGER DATE: