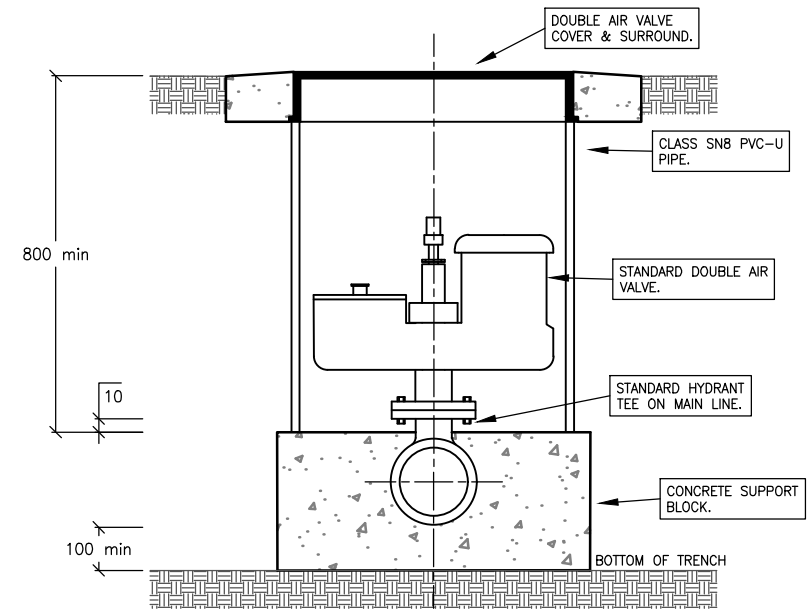


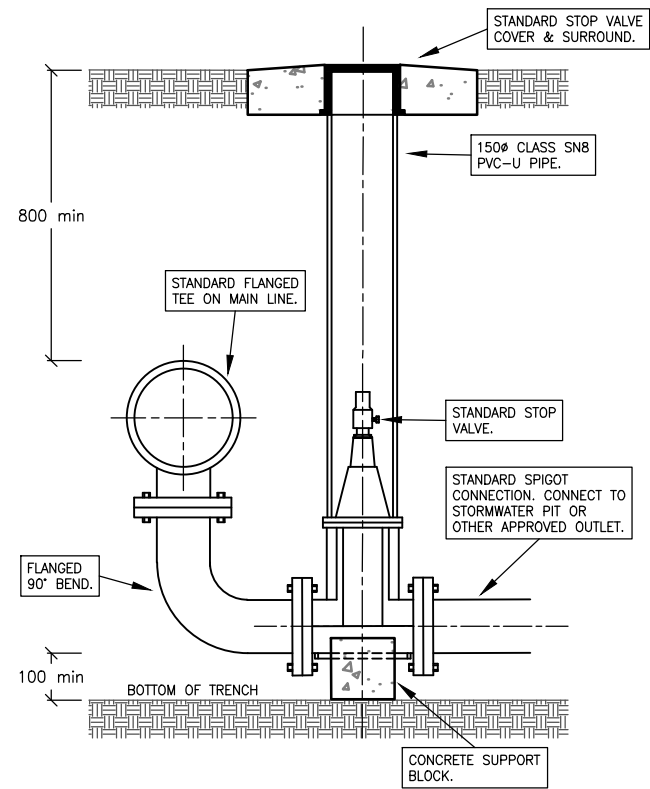
STANDARD SIDE SCOUR VALVE – 80mm
NOT TO SCALE

NOTES:

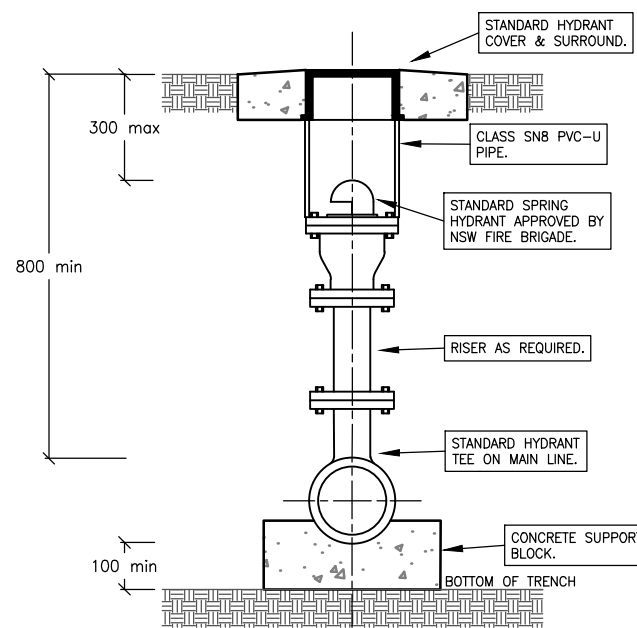
1. ALL DIMENSIONS IN MILLIMETRES.
2. ALL CONCRETE TO BE MINIMUM 25MPa.
3. ALL VALVES TO BE ANTI-CLOCKWISE CLOSING.
4. CONCRETE TO BE KEPT CLEAR OF COUPLINGS AND NUTS ON FITTINGS.
5. VALVES TO BE TESTED TO 2.4MPa.
6. VALVES TO HAVE PROTECTIVE POWDER COATING.



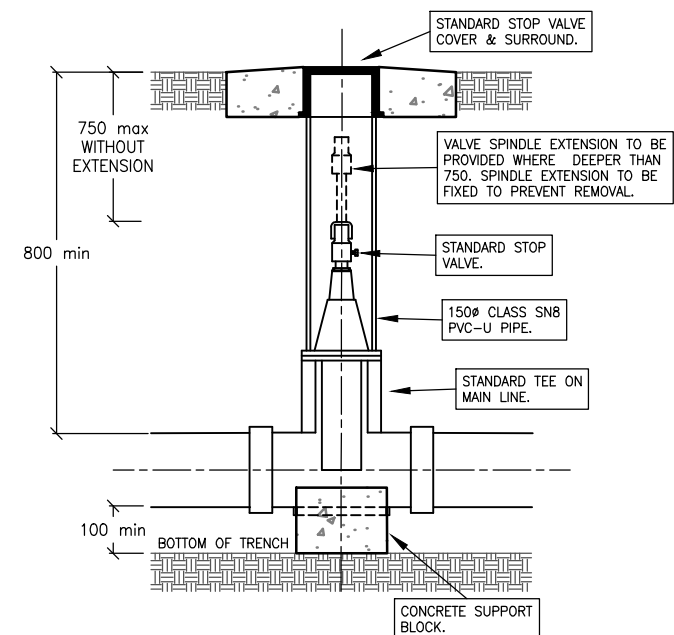
STANDARD AIR VALVE
NOT TO SCALE



STANDARD INVERT SCOUR VALVE – 80mm
NOT TO SCALE



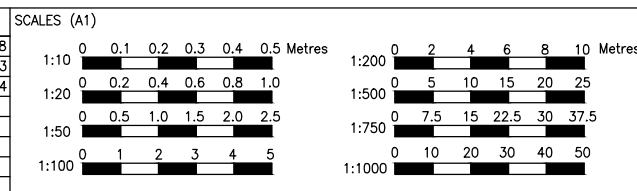
STANDARD HYDRANT
NOT TO SCALE



STANDARD STOP VALVE
NOT TO SCALE

CONSULTANT	APPROVED
CHECKED	

REV	DESCRIPTION	INITIALS	DATE
A	ISSUED FOR APPROVAL	DB/MF	15-12-98
B	DETAIL, NOTE & DRAFTING UPDATES	MC	21-09-23
C	VALVE SPINDLE EXTENSION NOTES ADDED	MC	28-02-24



SURVEYED	MC	CHECKED	TECHNICAL SERVICES MANAGER
DRAWN	MC		
DESIGN	-		
DATE	28-02-24		DIRECTOR ENGINEERING SERVICES
DATUM	AHD		



PROJECT		
BRC STANDARD WATER HYDRANT & VALVE DETAILS		
DESCRIPTION		
DETAILS & NOTES		
DWG No.	SHEET No.	REV.
EN7903	01	C