



Use and acknowledgements

This Early Learning Water Education Program is a free online education resource and whilst it has been specially designed to assist educators in the Bathurst Region, it is freely available to all early childhood educators and is targeted towards children in the pre-kindy age group (ages 3.5 – 5years).

Should you wish to use any of our materials or resources, please acknowledge Bathurst Regional Council as the owner and developer of this resource and any artists associated with the content or work you use (see full list of contributors further in this document).

For more information please contact: council@bathurst.nsw.gov.au ,att: Environmental Programs Officer.

Introduction

The program is supported by a suite of sector specific educational tools and resources and uses local examples and case studies to assist educators in the Early Learning environment to improve their understanding and awareness of water and to help modify behaviours in order to achieve more sustainable water use.

The Early Years Water Education Program aligns closely with learning outcomes in the [Belonging, Being & Becoming](#): The Early Years Learning Framework for Australia, and will also assist educators to meet or exceed sustainability accreditation requirements as laid out in the [National Quality Standard](#) Assessment and Rating Instrument document.

There are five key modules in the Early Learning Water Education program:

- **Module 1: The Water Cycle**
- **Module 2: How do we use water?**
- **Module 3: Water in Bathurst where it comes from**
- **Module 4: Being conservative with water**
- **Module 5: Keeping our waterways clean and healthy**

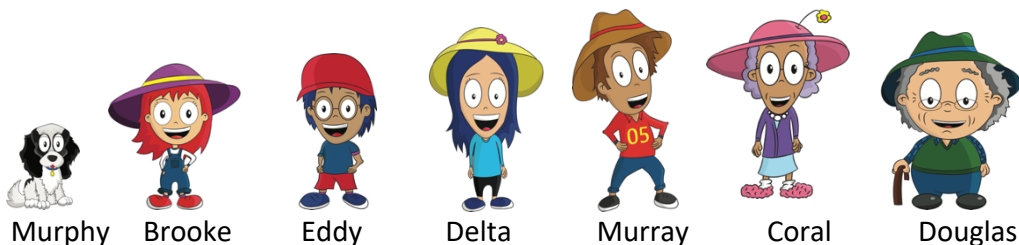
Each of the five modules includes at least three learning elements.

Each module begins with an overview that introduces the key learning elements and their related group discussion points and activities. The module overview section also includes a useful list of key terms and definitions, and detailed background and contextual information on the module focus area, providing early year's educators with insights into the module content that complement the learning activities and associated resources.

Each learning element within the modules is supported by an opportunity for class group discussion, stage appropriate activities and resources to consolidate knowledge and learning, and the chance for reflection and extension through suggested supporting materials and links.

The Wade family

Meet the Wade family: Murphy their dog, kids Brooke and Eddy, parents Delta and Murray and grandparents Coral and Douglas. The Wade family members feature throughout our Early Learning Water Education Program, helping us tell the story of water and providing links between the five modules, each of the learning elements and the supporting resources and activities. The Wade family illustrations act as a point of recognition for young children, engaging them with fun, recognisable characters and act as a linking device across all aspects of the program.



Program modules

Module 1: The Water Cycle		
Learning Elements	Group Discussion	Activity
1. What is the Water Cycle and How Does it Rain?	Where does water come from and how does it get there?	Water cycle role play using musical instruments and movement
		Complete the water cycle activity sheet
2. What are Clouds Made From?	What are clouds? Are they all the same shape, size and colour? How does it rain?	Cloud Study- outdoor activity using observation and reflection skills
		Cloud Creations - art and craft
3. Where Does the Rain Go?	Where does the water go when it rains and what happens to it?	Making it rain- an outdoors experiment that involves hypothesising and investigating

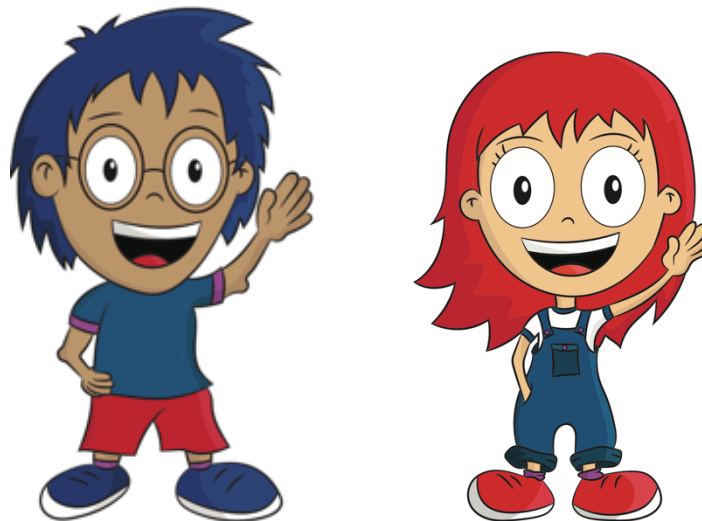
Module 2: How Do We Use Water?		
Learning Elements	Group Discussion	Activity
1. Water in our world: Where do we find water in nature?	How much of the Earth is covered in water? What types of water can we find? What do humans, animals and birds use water for?	How do animals and birds use water? Matching/ pairing activity
		Personal experiences with, in and around water
2. How do we use water at home and in the centre?	Discuss all the different ways water is used around the education environment and at home, for health, hygiene and recreation.	What we use water for- describing actions through use of prompt cards
		Water use through mime- reiterating learning through actions 'Water Discovery Walk'- reiterating learning through observations
3. How do we use water at work?	How is water used in different places of work such as in manufacturing (factories) or agriculture (farming)? What impacts does drought or water restrictions have?	Old MacDonald had a farm...but it didn't rain! Seed planting experiment
		What goes into a bottle of water? Introduction to resource use

Module 3: Water In Bathurst		
Learning Elements	Group Discussion	Activity
1. What is a dam and why are dams so important?	Have you ever been to visit a dam? Do you know what dams do and why they are so important?	Discovering dams, reservoirs and pump stations through photos and videos
2. The journey of water from dam to tap	How does water get from the dam to our taps?	Journey of water from dam to tap!
	What happens to the water on its journey?	Water moving through pipes- an experiment that involves hypothesising and investigating
3. Why do water levels in the dam change?	What causes changes to the water levels in a dam?	Investigating and problem solving experiment to demonstrate changing water levels in a dam

Module 4: Being Conservative With Water		
Learning Elements	Group Discussion	Activity
1. Why do we need to save water?	Why does the weather change at different times of the year?	Weather across the seasons- art and craft decision making activity
	What are the four seasons, and what weather do we associate with each season?	Creating a weather diary
		What's the weather today?
2. How can we look after water?	How many ways do we use water every day?	How water smart is our learning environment? Water Discovery Walk
	How can we use less water and make sure it does not go to waste?	Create your own 'Water- Let's Make It Last' stickers
3. Creating a water smart garden	In what ways does nature- plants and animals- need and use water? What does the water do? How do we use water in our gardens at our childcare centre and at home?	Designing and creating a water smart garden

Module 5: Keeping Our Waterways Clean & Healthy

Learning Elements	Group Discussion	Activity
4. What is litter and where does it come from?	Do you know what litter is? Where do you find litter?	What litter can you see?
	Who do you think litters?	Recognising littering behaviours using poster prompts
5. What happens to litter when it rains?	What happens to litter in the parks or on the streets when it rains?	Creating a water catchment in the sandpit
	Where does it go and what impact does this have on the creeks and rivers?	How does litter effect water quality? An outdoors experiment that involves inquiry and investigating
6. Why is it important to look after our creeks and rivers?	Why is it important that we look after our creeks and rivers? What colour is the water that comes out of the taps? How is water cleaned to make it safe for drinking?	How do you clean water? Demonstrating a water filtration system through research and problem solving



Curriculum links in Early Years Learning Framework

- Outcome 2: Children are connected with and contribute to their world.
 - Children become socially responsible and show respect for the environment.
- Outcome 3: Children have a strong sense of well-being.
 - Children take increasing responsibility for their own health and physical wellbeing.
- Outcome 4: Children are confident and involved learners.
 - Children develop a range of skills and processes such as problem solving, inquiry, experimentation, hypothesising, researching and investigating.
 - Children transfer and adapt what they have learned from one context to another.
- Outcome 5: Children are effective communicators.
 - Children interact verbally and non-verbally with others for a range of purposes.
 - Children express ideas and make meaning using a range of media.

Alignment with National Quality Standard (NQS)

The Early Learning Water Education Program has been developed to assist Centres to meet, or exceed, sustainability accreditation requirements as laid out in the National Quality Standard Assessment and Rating Instrument document in the following Quality Areas:

- Quality Area 2: Children’s health and safety.
 - Standard 2.1: Each child’s health and physical activity supported and promoted.
 - Element 2.1.2 Healthy practices and procedures: Effective illness and injury management and hygiene practices are promoted and implemented.
- Quality Area 3: Physical environment
 - Standard 3.2: The service environment is inclusive, promotes competence and supports exploration and play-based learning.
 - Element 3.2.3 Environmentally responsible: The services cares for the environment and supports children to become environmentally responsible

Delivery options and learning opportunities

This Early Learning Water Education Program has been designed to allow for flexible delivery.

The program can be delivered in its entirety; any of the five modules can be delivered as discrete elements; or the individual learning elements and activities can be utilised as independent units to support and complement an existing program on environmental sustainability.

The program has been developed to encourage early years educators to engage the children in a number of different learning experiences to accommodate a range of learning styles. As an example, the modules provide numerous opportunities for teacher-led activities, modelled play, open-ended play, experiential learning and participatory decision making.

In addition, the Early Learning Water Education Program provides opportunities for educators to observe and assess children's learning and development, both individually and in groups, which addresses:

Quality Area 1: Education program and practice in the National Quality Standard Assessment and Rating Instrument document

- Standard 1.3: Assessment and planning: Educators and coordinators take a planned and reflective approach to implementing the program for each child.



Collaborators and contributors

Our thanks to the following organisations, small businesses and artists and helpers who have been passionate contributors to, collaborators in and supporters of the development of this comprehensive, engaging early learning program and its many assets.

Hyperlinks to our contributors' websites can be found on our Program Overview page within the Early Learning Water Education Program web portal, established on Council's website:

www.bathurst.nsw.gov.au/early-learning-water-education-program



Envirocom Aust. EDUCATION, TRAINING, RESEARCH	Eaton Gorge THEATRE COMPANY	Indigo EVENTS & MARKETING
---	---------------------------------------	-------------------------------------



StartleArt GRAPHIC DESIGN	Stefan Elbourne ILLUSTRATOR	Mike Foxall ANIMATOR
-------------------------------------	---------------------------------------	--------------------------------



Goodstart EARLY LEARNING (KELSO)	Razzle Dazzle TV & DIGITAL	Natural Splendour GARDENING & HORTICULTURE	Gro Creative PHOTOGRAPHY & VIDEO
---	--------------------------------------	---	---



& staff at Bathurst Regional Council's Children's Services